

# IOWA SELECT HEREFORD SALE

Thursday, Feb. 16, 2012  
12 Noon (CST)

North Annex Sale Ring  
Iowa State Fairgrounds, Des Moines, Iowa  
9 a.m. — Sale cattle parade in  
Pioneer Pavilion

Sale Sponsored by:



Iowa Hereford Breeders  
Association



Iowa  
**Beef**  
**EXPO**

# 2012 IOWA BEEF EXPO

## SPECIAL INCENTIVES/OFFERS

**The Iowa Hereford Breeders Association** will reimburse the entry fee of any heifer purchased at the 2012 Iowa Select Hereford Sale that is shown by the original purchaser at the 2012 Iowa Junior Hereford Association Preview Show, June 15-17, in Spencer.

**The Iowa Beef Breeds Council** will award \$500 to the junior exhibitor of the highest ranking heifer purchased from each breed sale at the 2012 Iowa Beef Expo and exhibited at the 2012 Iowa State Fair.

**Hawkeye Breeders Service Inc.**, offers one free semen collection on any one bull that brings \$2,500 or more in any of the sales held during the 2012 Expo. The collection work must be completed prior to the 2013 Iowa Beef Expo. Bull must be presented to the Adel, Iowa, collection site. Hawkeye Breeders Service will also present specially embroidered Iowa Beef Expo windshirts to the purchaser of the high-selling bull and high-selling female in each sale at the 2012 Iowa Beef Expo.

**Trans Ova Genetics** is offering to the purchaser of the high-selling female in each breed selling 25-head or more at the 2012 Iowa Beef Expo one free embryo flush on the female of his/her choice from his/her breeding herd and three free transfers into the owner's recipients. The embryo work must be completed prior to the 2013 Iowa Beef Expo. Contact Mark Johnson for complete details.

**Muir Embroidery and Livestock Plus, Inc.** will present specially embroidered Iowa Beef Expo jackets to the consignors of the high-selling bull and high-selling female in each sale. Jacket must be ordered before the end of the 2012 Iowa Beef Expo.

**Purple Bound Show Feeds, R&B Feeds and U.S. Feeds** will present certificates for one free bag of U.S. Core Calving Mineral with BioMos to the purchaser of the high-selling bull and high-selling female in each sale. Certificate must be redeemed at the booth before the end of the 2012 Iowa Beef Expo.

**Hawkeye Tack & Western Wear** — All buyers registered prior to the start of each of the breed sales held at the Iowa Beef Expo will be eligible to win a special embroidered Iowa Beef Expo cap.

### Join us for these pre-sale activities:

#### Wednesday, Feb. 15, 5 p.m.

- Forum with Jack Ward, AHA, Gammon Barn
- Refreshments sponsored by Hawkeye Breeders Service Inc.

#### Thursday, Feb. 16, 9 a.m.

- Parade of sale cattle, Pavilion

---



---

## SALE STAFF & SPECIAL GUESTS

|  |              |
|--|--------------|
| Monte Lowderman, Auctioneer .....                        | 309-255-0110 |
| Joe Rickabaugh, American Hereford Association.....       | 785-633-3188 |
| Jack Ward, American Hereford Association.....            | 816-842-3757 |
| Tom Rooney, <i>Midwest Marketer</i> .....                | 515-491-6025 |
| Mike Sorensen, <i>Livestock Plus</i> .....               | 641-745-7949 |
| Dr. Russ Stickley, Veterinarian.....                     | 319-231-0058 |
| Donnelly Auction Service, Clerking                       |              |
| David Trowbridge, American Hereford Association Director |              |
| Alecia Knapp, Iowa Hereford Queen                        |              |
| Mike and Becky Simpson, Sale Managers .....              | 515-833-2991 |

**Sale Day Phones:**  
**North Annex • 515-262-3111, ext. 303**  
**Simpsons' cell • 515-707-2657**

### IOWA HEREFORD BREEDERS ASSOCIATION

President: Steve Landt  
Vice President: Jon Blin  
Secretary: Bryce Godbersen  
Treasurer: Tom Heidt  
Administrative Secretary: Becky Simpson  
Sale Committee: Jon Blin, Steve Landt, Mike Sorensen  
and Nathan Stickley

#### Terms & Guarantees

The cattle offered for sale are sold under the terms and guarantees recommended by the American Hereford Association with reference to health, freedom from defects, reproductive unsoundness and freedom from specific genetic unsoundness **except AI certificates will not be provided for females carrying the service of non-consignor-owned sires.** The recommended refunds or adjustments will be made in case animals fail to live up to the seller's guarantee. For complete terms and guarantees, see [www.hereford.org](http://www.hereford.org).

#### Liability

All persons who attend this sale do so at their own risk. Neither the sellers, sale facility nor sale staff assume liability for any accidents.

#### Additional Information

Yearling bulls must have a minimum scrotal circumference of 30 cm. and a minimum 3.0 lb. weight-per-day-of-age.  
Current pictures and other information on the offering will be available at [www.iowahereford.org](http://www.iowahereford.org) or [www.herefordmarketplace.com](http://www.herefordmarketplace.com).

#### THIS SALE WILL BE LIVE ON THE INTERNET

Go to [www.liveauctions.tv](http://www.liveauctions.tv) to register for a buyer number **at least two days prior to the sale.** Internet and telephone buyers should have transportation arranged by the end of the sale. If not, animals will return to the consignor's farm and buyers will need to arrange pick-up or delivery directly with the consignor. Yardage charges may apply.



#### Breed Avg. EPDs for 2010 Born Calves

| CE  | BW  | WW | YW | MM | M&G | MCE | MCW | SC  | FAT   | REA  | MARB | BMI\$ | CEZ\$ | BIIS | CHB\$ |
|-----|-----|----|----|----|-----|-----|-----|-----|-------|------|------|-------|-------|------|-------|
| 0.4 | 3.6 | 44 | 73 | 17 | 39  | 0.9 | 85  | 0.7 | 0.001 | 0.25 | 0.04 | 17    | 15    | 15   | 20    |

*EPDs in the top 35% of the breed are highlighted in yellow.*

---

---

|  |              |
|--|--------------|
| <b>A&amp;J Cattle</b> .....                              | 61           |
| Geneseo, IL, 641-680-4843                                |              |
| <b>AbraKadabra Cattle Company</b> .....                  | 28           |
| Columbia, MO, 573-441-9951                               |              |
| <b>Baja Cattle</b> .....                                 | 52, 54       |
| Ames, IA, 515-689-5275                                   |              |
| <b>Benedict Herefords</b> .....                          | 22           |
| Mason City, IL, 217-737-5686                             |              |
| <b>Biggs Polled Herefords</b> .....                      | 12, 13, 37   |
| Dixon, IL, 815-285-0227                                  |              |
| <b>Casteel Polled Herefords</b> .....                    | 41, 56       |
| Perry, IA, 515-490-5502, 515-229-2007                    |              |
| <b>Mike Dierenfeld Family Polled Herefords</b> .....     | 26, 42       |
| Northwood, IA, 641-425-8780                              |              |
| <b>Doss Hereford Farms</b> .....                         | 10, 60 (A&B) |
| Smithville, MO, 816-532-0658                             |              |
| <b>Doss Hereford Farms &amp; Tom Luthy</b> .....         | 24           |
| Smithville and Rogersville, MO, 816-532-0658             |              |
| <b>Double K Herefords</b> .....                          | 31           |
| Walcott, IA, 563-843-2595, 563-528-0261                  |              |
| <b>Bill Goehring</b> .....                               | 29, 45       |
| Libertyville, IA, 641-919-9365                           |              |
| <b>JJB Cattle Company</b> .....                          | 33, 49, 51   |
| Independence, IA, 319-210-4645                           |              |
| <b>K7 Herefords (Tom and Jo Heidt)</b> .....             | 59           |
| Lockridge, IA, 608-574-2309                              |              |
| <b>Steve Landt Herefords</b> .....                       | 5            |
| Union, IA, 641-751-8810                                  |              |
| <b>Lowderman Cattle Co.</b> .....                        | 15, 20, 47   |
| Macomb, IL, 309-833-5543                                 |              |
| <b>M&amp;M Herefords (Mike and Monique Natale)</b> ..... | 14, 34       |
| Runnells, IA, 515-966-2509                               |              |
| <b>Maple Glen Farm (Ned and Deena Schroder)</b> .....    | 17, 44       |
| Princeton, IA, 563-289-4972                              |              |
| <b>Owego Stock Farm</b> .....                            | 27           |
| Argyle, WI, 608-543-3778                                 |              |
| <b>Paul Polled Herefords</b> .....                       | 38, 58       |
| Marseilles, IL, 815-795-6014                             |              |
| <b>Petersen Herefords</b> .....                          | 8            |
| DeWitt, IA, 563-659-9464                                 |              |
| <b>Phillips-Renner Farms</b> .....                       | 30           |
| Richmond, MO, 816-878-7305                               |              |

---

---

---

---

|  |                   |
|--|-------------------|
| <b>Pierce's Hereford Haven</b> .....               | <b>18, 19, 43</b> |
| Baraboo, WI, 608-434-0578                          |                   |
| <b>Rabideau Polled Herefords</b> .....             | <b>7, 57</b>      |
| Clifton, IL, 815-694-2113                          |                   |
| <b>R&amp;R Cattle Co.</b> .....                    | <b>3, 50</b>      |
| Wilton, IA, 563-732-2957                           |                   |
| <b>James Rosenberg and Jay Curran</b> .....        | <b>2</b>          |
| Clear Lake, IA, 641-357-8705                       |                   |
| <b>Solsma Show Steers</b> .....                    | <b>6, 32</b>      |
| Sanborn, IA, 712-729-3174                          |                   |
| <b>Mike Sorensen Family</b> .....                  | <b>21, 39, 46</b> |
| Greenfield, IA, 641-745-7949                       |                   |
| <b>Mike Sorensen Family &amp; Brady Edge</b> ..... | <b>35</b>         |
| Greenfield and West Branch, IA, 641-745-7949       |                   |
| <b>Stickley &amp; Sons Herefords</b> .....         | <b>25</b>         |
| Parkersburg, IA, 319-231-0058, 319-231-4167        |                   |
| <b>Valley Creek Farm</b> .....                     | <b>53, 55</b>     |
| Stillman Valley, IL, 815-222-4089                  |                   |
| <b>Sage Washburn</b> .....                         | <b>16</b>         |
| Hornick, IA, 712-874-3313                          |                   |
| <b>WEBCows Deppe Bros.</b> .....                   | <b>23, 40</b>     |
| Maquoketa, IA, 563-672-3531                        |                   |
| <b>White Willow Polled Herefords</b> .....         | <b>9, 36</b>      |
| Morris, IL, 815-941-4175                           |                   |
| <b>Wiese &amp; Sons</b> .....                      | <b>4, 11, 48</b>  |
| Manning, IA, 712-653-3678                          |                   |
| <b>Rick and Lori Wood &amp; Son</b> .....          | <b>1</b>          |
| Eldora, IA, 641-939-7739                           |                   |

*Cover photo by Mary Trowbridge, Tabor, Iowa*



**Lot 1 — Heck Thundershine 1W**

# 1 HECK THUNDERSHINE 1W

**Bull**

P43034337 — Calved: March 20, 2009 — Tattoo: LE 1W/RE HECK — Polled



STAR K SEE THUNDER 288P ET  
GBF 288P THUNDER 132T  
P42863008 AAA VICTRESS 29K

STAR SS THUNDER LT 62J (SOD,CHB)(DLF,HYF,IEF)  
K SEE K  
HUTH VAQUERO VIC 1F  
AAA RUBY LADY 12C

SUNRISE WIND DANCER 30N  
GBF SUNSHINE 30R  
P42714581 SUNRISE JENNA 27M

HA KINGPIN K042  
SUNRISE SAMANTHA 14K  
EPRH PROGENITOR 157H (SOD)  
SUNRIES SHELLY 4J

| CE  | BW  | WW | YW | MM | M&G | SC  | REA  | MARB  |
|-----|-----|----|----|----|-----|-----|------|-------|
| 1.6 | 2.5 | 44 | 72 | 11 | 33  | 0.7 | 0.26 | -0.03 |

- *Consigned by Rick and Lori Wood & Son*
- Adj. BW 82 lb., ratio 93; adj. 205-day wt. 620 lb., ratio 100.
- This son of Thunder 132T is a proven sire with long lines and deep red coloring. 2011 Iowa State Fair Senior Champion Bull.



**Lot 2 — JR CCF Superstar W0985**

# 2 JR CCF SUPERSTAR W0985

**Bull**

P43066022 — Calved: Dec. 25, 2009 — Tattoo: BE W0985 — Polled



REMITALL OLYMPIAN ET 262L (CHB)  
REMITALL PATRIOT ET 13P (CHB)(DLF,HYF,IEF)  
P42597023 REMITALL GINGER 23G (DLF,HYF,IEF)

REMITALL GOVERNOR 236G (SOD,CHB)  
REMITALL CATALINA 24H  
CIRCLE-D WRANGLER 832W (SOD,CHB)(HYF)  
PLAIN LAKE BELLE 20X 117P 5B

BAR JZ TRADITION 434V (SOD)(DLF,HYF,IEF)  
EF SCHU-LAR 434V DIXIE N103  
P42450642 GERBER 117F DIXIE 009K

BT MOHICAN TRADITION 530 (SOD,CHB)  
BAR JZ BANNER LDY 693P (DOD)  
GERBER WATCHFIRE 117F (SOD,CHB)  
GERBER 80X DIXIE 106Z

| CE   | BW  | WW | YW | MM | M&G | SC  | REA  | MARB |
|------|-----|----|----|----|-----|-----|------|------|
| -2.9 | 3.2 | 55 | 84 | 21 | 49  | 0.8 | 0.40 | 0.15 |

- *Consigned by James Rosenberg and Jay Curran*
- Adj. BW 88 lb., ratio 100; act. 205-day wt. 700 lb.; act. 365-day wt. 1,350 lb.
- "Superstar" is a stout, moderate-framed, well-pigmented 2-year-old from our good-uddered brood cow donor, Dixie N103 and by the high performance sire, Patriot 13P. With his strong EPDs in WW, YW, M&G, REA and strong marbling with an 88 lb. birth weight, he is ready to use as a herd sire in a Hereford or crossbred program.



P43072708 — Calved: Jan. 1, 2010 — Tattoo: RE 1X — Polled

REMITALL ONLINE 122L (SOD,CHB)(DLF,HYF,IEF)  
 STAR 8063 DOMEGA 32U ET  
 P42872278 RB L1 DOMINETTE 8063 (DLF,HYF,IEC)

REMITALL EMBRACER 8E (SOD,CHB)(HYF)  
 REMITALL CATALINA 24H  
 HH ADVANCE 697F 1ET  
 RB L1 DOMINETTE 4059 (DLF,HYF,IEF)

HUTH STACKED DECK M020 (CHB)  
 R&R JILL 7S  
 P42716581 R&R JILL JJ 17N

RRH MR FELT 3008 (SOD,CHB)(DLF,HYF,IEF)  
 K HUTH ENHANTRESS K001  
 R&R JAVA JACK 67J  
 R&R JILL STYLE 12J

| CE  | BW  | WW | YW | MM | M&G | SC  | REA  | MARB |
|-----|-----|----|----|----|-----|-----|------|------|
| 1.8 | 2.6 | 45 | 76 | 15 | 38  | 1.1 | 0.21 | 0.14 |

- Consigned by R&R Cattle Co.
- BW 76 lb.; adj. 205-day wt. 636 lb., ratio 100; adj. 365-day wt. 1,350 lb., ratio 100
- A moderate-framed bull with balanced EPDs.
- Selling  $\frac{3}{4}$  interest and full possession. Retaining  $\frac{1}{4}$  semen interest for in-herd use.



Lot 4 — WS Intense Duke 512 05



P43177656 — Calved: Feb. 1, 2010 — Tattoo: BE 05 — Horned

WS INTENSE DUKE 162 (CHB)  
 WS INTENSE DUKE 512 (DLF,IEF)  
 P42647002 ALH A3 SUGAR 424

WS INTENSE DUKE 830 (CHB)  
 WS MS EXTEND 4114 799  
 CLF ALEX 449 A3 (SOD)(DLF,HYF,IEF)  
 ALH MYSTIC SPIDEL 073

FELTONS MATTHEW 597 (SOD)  
 FELTONS MATRON N31  
 P42132096 FELTONS LUTETTE H14

F 208 PROSPECTOR 376  
 FELTONS B36 (DOD)  
 FHR J215 LUTE 987 (CHB)(DLF,HYF,IEF)  
 FELTONS C27

| CE   | BW  | WW | YW | MM | M&G | SC  | REA  | MARB |
|------|-----|----|----|----|-----|-----|------|------|
| -0.1 | 3.4 | 40 | 64 | 9  | 30  | 0.9 | 0.28 | 0.02 |

- Consigned by Wiese & Sons
- Adj. 205-day wt. 737 lb., ratio 100
- Fully pigmented and up-headed with style. Bold muscled with energy in his stride and movement. A stamp of profit to any part of the beef industry. His dam is Felton bred — consistently produces a good one!

### Breed Avg. EPDs for 2010 Born Calves

| CE  | BW  | WW | YW | MM | M&G | MCE | MCW | SC  | FAT   | REA  | MARB | BMI\$ | CEZ\$ | BI\$ | CHB\$ |
|-----|-----|----|----|----|-----|-----|-----|-----|-------|------|------|-------|-------|------|-------|
| 0.4 | 3.6 | 44 | 73 | 17 | 39  | 0.9 | 85  | 0.7 | 0.001 | 0.25 | 0.04 | 17    | 15    | 15   | 20    |

EPDs in the top 35% of the breed are highlighted in yellow.



Lot 5 — SL T44 Excel 06

## 5 SL T44 EXCEL 06

Bull



43108214 — Calved: Feb. 7, 2010 — Tattoo: BE 06 — Horned

GO 205 EXCEL N32  
GO N32 EXCEL T44  
42792008 GO MS L18 EXCEL N65

GO EXCEL 8205 (SOD)  
GO MS MARY 6089 (DOD)  
GO EXCEL L18 (SOD,CHB)(DLF,HYF,IEF)  
GO MS 274 EXCEL 0096

CJH HARLAND 408 (CHB)(DLF,HYF,IEF)  
WS HARLET 7112  
42832132 WS ROSA 374

HH ADVANCE 9005J (CHB)(DLF,HYF,IEF)  
CJH L1 DOMINETTE 0064 (DLF,HYF,IEF)  
CTY BONANZA 01K (DLF,HYF,IEF)  
WS SHANA 138

| CE  | BW  | WW | YW  | MM | M&G | SC  | REA  | MARB |
|-----|-----|----|-----|----|-----|-----|------|------|
| 0.3 | 4.8 | 61 | 107 | 26 | 56  | 1.3 | 0.45 | 0.08 |

- Consigned by Steve Landt Herefords
- Act. BW 88 lb.; adj. 205-day wt. 735 lb., ratio 117; adj. 365-day wt. 1,313 lb., ratio 114
- The best bull we have raised so far. Used on some of our own cows last year and we will have calves by him before the Expo. His half-sister was tied for second high seller at the 2011 Ladies of the Royal Sale.
- Selling  $\frac{3}{4}$  interest and full possession. Retaining  $\frac{1}{4}$  semen interest.

## 6 SOLSMA COLONEL XANDER 800

Bull



P43089902 — Calved: Feb. 22, 2010 — Tattoo: BE 800 — Polled

THM DURANGO 4037 (CHB)(DLF,HYF,IEF)  
CRR ABOUT TIME 743 (CHB)(DLF,HYF,IEF)  
P42797564 CRR D03 CASSIE 206

CS BOOMER 29F (SOD,CHB)(DLF,HYF,IEF)  
THM 7085 VICTRA 9036 (DLF,HYF,IEF)  
SHF INTERSTATE 20X D03 (SOD,CHB)  
CRR 475E CASSIE 838

HH HUNTER K849  
SOLSMA SANDY JANE 806 ET  
P42686009 CAROL LUCY FELT 25C 9603

MOHICAN HUNTER 57H (SOD,CHB)  
RH DOMINETTE 5085  
III FLEX 38A 25C  
GAY LUCY FELTONS 9207

| CE  | BW  | WW | YW | MM | M&G | SC  | REA  | MARB |
|-----|-----|----|----|----|-----|-----|------|------|
| 0.3 | 4.5 | 49 | 79 | 15 | 40  | 0.9 | 0.41 | 0.11 |

- Consigned by Solsma Show Steers
- BW 84 lb.; Adj. 205-day wt. 683 lb., ratio 100; adj. 365-day wt. 1,220 lb.
- This moderate framed 2-year-old was used on all our heifers this year and has a great disposition. His dam is a full sister to the 2004 American Royal Grand Champion Female. This young bull has had quite a show career himself, being grand champion bull at the Clay County Fair and reserve calf champion at the 2010 Iowa State Fair. His yearling full brother sells as Lot 32.

## 7 RPH ABOUT TIME TUFF 743 3X

Bull



P43118854 — Calved: Feb. 23, 2010 — Tattoo: LE 3X — Polled

THM DURANGO 4037 (CHB)(DLF,HYF,IEF)  
CRR ABOUT TIME 743 (CHB)(DLF,HYF,IEF)  
P42797564 CRR D03 CASSIE 206

CS BOOMER 29F (SOD,CHB)(DLF,HYF,IEF)  
THM 7085 VICTRA 9036 (DLF,HYF,IEF)  
SHF INTERSTATE 20X D03 (SOD,CHB)  
CRR 475E CASSIE 838

C - S PURE GOLD 98170 (SOD,CHB)(DLF,IEF)  
RPH 582W GOLDEN GIRL 98170 9S  
P42737272 RPH 582W PROSPECTA 517 12G

C GOLD RUSH 1ET  
C MS DOM 93218 1ET  
FELTONS 517 (SOD,CHB)(HYF)  
GK RUSTLING LADY 582W

| CE  | BW  | WW | YW | MM | M&G | SC  | REA  | MARB |
|-----|-----|----|----|----|-----|-----|------|------|
| 4.1 | 0.0 | 46 | 67 | 19 | 42  | 1.1 | 0.50 | 0.13 |

- Consigned by Rabideau Polled Herefords
- Act. BW 86 lb.; adj. 205-day wt. 768 lb., ratio 98; adj. 365-day wt. 1,246 lb., ratio 100.
- This bull combines attractive looks, dimension, a smooth muscle pattern, correctness and thickness with a powerful pedigree, good performance record and balanced EPDs. His sire, About Time, was a Denver champion and his maternal grandsire, Pure Gold, is perhaps the greatest horned bull of our era. He will be a top herd bull.



8

## DP RENO 1004

Bull

P43113357 — Calved: Feb. 26, 2010 — Tattoo: LE 004 — Polled



BR MOLER ET (CHB)(DLF,IEF)  
 C RENO 6142 ET (DLF,IEF)  
 42701502 C NOTICE ME ET

REMITALL ONLINE 122L (SOD,CHB)(DLF,HYF,IEF)  
 DM L1 DOMINETTE 820  
 C -S PURE GOLD 98170 (SOD,CHB)(DLF,IEF)  
 HH MISS ADVANCE 104A (DOD)

REMITALL ONLINE 122L (SOD,CHB)(DLF,HYF,IEF)  
 DP MISS ONLINE 508  
 P42586896 JHF 189 DOMETTE 317J

REMITALL EMBRACER 8E (SOD,CHB)(HYF)  
 REMITALL CATALINA 24H  
 KB CENTURION 189  
 BJ EXPLORETTE 014J (DOD)

| CE   | BW  | WW | YW | MM | M&G | SC  | REA  | MARB |
|------|-----|----|----|----|-----|-----|------|------|
| -0.4 | 4.4 | 56 | 90 | 23 | 51  | 0.9 | 0.50 | 0.10 |

- Consigned by Petersen Herefords
- Adj. BW 84 lb.; adj. 205-day wt. 704 lb., ratio 109; adj. 365-day wt. 1,284 lb., ratio 100.
- This 2-year-old bull was used on heifers this past summer. He is out of the same cow that produced last year's third high-selling bull at this sale.

9

## WW EASY RIDER 20X

Bull

P43096445 — Calved: March 4, 2010 — Tattoo: LE 20 X — Polled



BR DM CHANNING ET (CHB)(DLF,IEF)  
 H EASY DEAL 609 ET (CHB)(DLF,HYF,IEF)  
 P42717067 C MS PURE GOLD 2003

REMITALL ONLINE 122L (SOD,CHB)(DLF,HYF,IEF)  
 DM L1 DOMINETTE 820  
 C -S PURE GOLD 98170 (SOD,CHB)(DLF,IEF)  
 C 8403 MS ACHV 96047

CH ENUFF PROPHET 2913  
 PHH PCC 202 KARINA 835 ET (DLF,HYF,IEF)  
 42897377 PHH 29F SHAKIRA 202

M&M TUFF ENUFF 618  
 CH LADY PROPHET 0220  
 CS BOOMER 29F (SOD,CHB)(DLF,HYF,IEF)  
 PHH VICTRA 116D 777

| CE   | BW  | WW | YW | MM | M&G | SC  | REA  | MARB |
|------|-----|----|----|----|-----|-----|------|------|
| -1.4 | 4.8 | 47 | 87 | 22 | 46  | 0.5 | 0.54 | 0.03 |

- Consigned by White Willow Polled Herefords
- Adj. BW 93 lb.; adj. 205-day wt. 820 lb., ratio 124.
- Easy Rider is a real herd bull, an Easy Deal son out of a powerful Enuff Prophet daughter, our only flush cow. They were cow-calf champion at the Iowa State Fair and reserve cow-calf champion at the Illinois State Fair.



Lot 10 — EFBEEF 2013 Goodfellow X610

10

## EFBEEF 2013 GOODFELLOW X610

Bull

P43091691 — Calved: March 5, 2010 — Tattoo: LE X610/RE PEF — Polled



BAR JZ PUCKSTER 892H (CHB)  
 R PUCKSTER 2013 (CHB)(DLF,HYF,IEF)  
 P42400457 R MISS PATEND 421

BAR JZ PUCKSTER 529D (CHB)  
 BAR JZ 434 LADY 218Y  
 R PATEND 2426 (CHB)  
 R MISS ADVANCE 799

EF 821C FELLIS K334 (CHB)  
 EFBEEF K334 KATE U250 ET  
 P42882977 FELTONS KATE P38 (DOD)(DLF,HYF,IEF)

EF F524 FELLIS 821C (CHB)(DLF,HYF,IEF)  
 EF 151E VICKI 6814  
 FELTONS DOMINO 774 (SOD,CHB)(DLF,HYF,IEF)  
 FELTONS ENDURETT H62

| CE  | BW   | WW | YW | MM | M&G | SC  | REA  | MARB |
|-----|------|----|----|----|-----|-----|------|------|
| 5.8 | -1.0 | 54 | 74 | 16 | 43  | 1.2 | 0.42 | 0.25 |

- Consigned by Doss Hereford Farms
- Actual BW 69 lb.; adj. 205-day wt. 604 lb., ratio 99; 365-day wt. 1,064 lb., ratio 93.
- Here is a bull with a super pedigree, EPDs and profile. He is a stout coming 2-year-old that we liked well enough to use lightly as our clean-up after AI breeding in both our spring and fall calving programs. He brings calving ease, performance and carcass to the equation. Look at his EPD graph and you will like what you see. You will like him even more when you see him.
- Selling ½ interest and full possession. Ellis Farms retains ½ semen interest.



Lot 11 — WS Grand Mark 644 0169

## 11 WS GRAND MARK 644 0169

Bull



43136893 — Calved: April 23, 2010 — Tattoo: BE 0169 — Polled

WS GRAND MARK 644  
42739100 WS MISS PACE 0280 (DOD)

WS GRAND DUKE 846 (DLF,IEF)  
HHR 20 DOMINETTE 502 (DOD)  
LLL MR PACER 740W 78G (SOD)  
WS MS CADNCE 45 7139

WS BATTLE 64 0161 (CHB)  
WS MISS BATTLE 0161 237  
42305493 WS MS BARON 040

WS STAR 3178 64 (SOD,CHB)  
WS PEARLETTE 3102 (DOD)  
WS RED BARON 110  
WS MS BULLS EYE 184 (DOD)

| CE  | BW  | WW | YW | MM | M&G | SC  | REA  | MARB |
|-----|-----|----|----|----|-----|-----|------|------|
| 0.7 | 2.8 | 54 | 88 | 17 | 44  | 0.5 | 0.34 | 0.19 |

- Consigned by Wiese & Sons
- Act. BW 75 lb.; adj. 205-day wt. 724 lb., ratio 120; adj. 365-day wt. 1,298 lb., ratio 120.
- Great length of body, pigment, athletic in pen or pasture. Solid in his muscle. His sire, 644, produces consistent individuals that are popular with our customers with many retained in the herd.

## 12 BIGGS 758T XCEDRIN U29 X26

Bull



P43090734 — Calved: April 26, 2010 — Tattoo: LE X26 — Scurred

FELTONS LEGEND 242 (SOD,CHB)(HYF)  
MF 54N TENNYSON 758T ET (DLF,HYF,IEF)  
P42828409 MSU TCF RACHAEL ET 54N (DLF,HYF,IEF)

FELTONS DOMINO 774 (SOD,CHB)(DLF,HYF,IEF)  
FELTONS G15  
REMITALL ONLINE 122L (SOD,CHB)(DLF,HYF,IEF)  
HH MISS ADV 786G 1ET

NPH 204P POUNDER 14S  
BIGGS 14S SCARLETT P35 U29  
P42883915 BIGGS 2032 CAMEO J8 P35 (DOD)

REMITALL LAGRD POUNDER ET 204P  
NPH 29F MS SCARLETT 30L  
BOYD GENETIC POWER 2032  
BIGGS MS EXCITMNT U17 J8

| CE  | BW  | WW | YW | MM | M&G | SC  | REA  | MARB |
|-----|-----|----|----|----|-----|-----|------|------|
| 0.9 | 4.9 | 62 | 99 | 22 | 53  | 0.8 | 0.42 | 0.12 |

- Consigned by Biggs Polled Herefords
- Actual BW 86 lb.; adj. 205-day weight 701 lb., ratio 124; adj. 365-day weight 1,197 lb., ratio 112
- Xcedrin was our spring yearling show bull this past summer and he would be a herd sire for us if his sire, a full brother to MSU TCF Revolution 4R, dropped over tomorrow. Born unassisted at 86 lb. to a first-calf heifer, he has growth EPDs in the breed's top 1%; M&G in the top 5%; MARB in the top 20%. Look at him and his numbers — few will be better.

## 13 BIGGS 29U XCALIBER T6 X30

Bull



P43090741 — Calved: May 14, 2010 — Tattoo: LE X30 — Polled

BR MOLER ET (CHB)(DLF,IEF)  
MSU ULYSSES 29U ET  
P42913162 MSU MISS KEYNOTE 6J

REMITALL ONLINE 122L (SOD,CHB)(DLF,HYF,IEF)  
DM L1 DOMINETTE 820  
REMITALL KEYNOTE 20X (SOD,CHB)  
MSU MISS EXCEL 9D

FELTONS LEGEND 242 (SOD,CHB)(HYF)  
BIGGS 242 ELEANOR H27 T6  
P42826759 BIGGS SKYLETTE E14 H27

FELTONS DOMINO 774 (SOD,CHB)(DLF,HYF,IEF)  
FELTONS G15  
BIGGS CANYON Y17 E37  
BIGGS CATALINA Y3 E14 (DOD)

| CE  | BW  | WW | YW | MM | M&G | SC  | REA  | MARB |
|-----|-----|----|----|----|-----|-----|------|------|
| 3.3 | 2.7 | 46 | 82 | 14 | 37  | 0.7 | 0.46 | 0.07 |

- Consigned by Biggs Polled Herefords
- Act. BW 80 lb.; adj. 205-day wt. 555 lb., ratio 98; adj. 365-day wt. 1,084 lb., ratio 101
- Xcaliber is known as "The Beast" at our house. In my nearly 40 years of breeding polled Herefords, I have never raised one this wide and thick. Xcaliber's reality: moderate birth weight, above average for weaning and yearling weight and a MARB EPD in the top 3%. He is a serious bull for a serious cowman.

# 14 MM ROWDY OWDY

Bull

P43233400 — Calved: June 10, 2010 — Tattoo: LE 72A10/RE MM — Polled



REMITALL ONLINE 122L (SOD,CHB){DLF,HYF,IEF}  
 STAR DEMERSON 8U  
 P42872333 RB L1 DOMINETTE 8063 (DLF,HYF,IEC)

REMITALL EMBRACER 8E (SOD,CHB){HYF}  
 REMITAL CATALINA 24H  
 HH ADVANCE 697F 1ET  
 RB L1 DOMINETTE 4059 (DLF,HYF,IEF)

STAR ERIC THE RED 21N ET  
 TAM 51T MISS JODIE  
 P42983130 TAM 64FM MISS CHESSY

STAR OBF BOGART 5L (CHB){DLF,HYF,IEF}  
 STAR ROCKIN ERICA 38F (DLF,HYF,IEF)  
 STAR RANCHER 225J  
 FBF SIS BANG BOOM 64FM

| CE  | BW  | WW | YW | MM | M&G | SC  | REA  | MARB |
|-----|-----|----|----|----|-----|-----|------|------|
| 0.1 | 3.8 | 49 | 79 | 18 | 42  | 0.9 | 0.39 | 0.00 |

- Consigned by M&M Herefords
- This bull is super attractive through his front and his back leg comes out of the rear with authority. Rowdy is the high quality kind of young sire candidate in every way. His dam, Miss Jodie sired by Eric the Red, is one of our best donor cows.



Lot 15 — LCC Timeout 0177

# 15 LCC TIMEOUT 0177

Bull

P43098871 — Calved: Aug. 27, 2010 — Tattoo: LE 0177 — Polled



REMITALL EMBRACER 8E (SOD,CHB){HYF}  
 LCC 8E TIMEOUT 3T ET  
 P42803222 LCC MERRY TIME 244

REMITALL ACME 10A (SOD)  
 PLAIN LAKE BELLE 20X 117P 5B  
 MSU BR HALLMARK 25H  
 MSU BR MERRY 24K

BR DM CORONA 5042 ET  
 LCC 5042 MISS NIGHTLIFE 812  
 P42901126 FCF MS HOLLYWOOD 045

REMITALL ONLINE 122L (SOD,CHB){DLF,HYF,IEF}  
 DM L1 DOMINETTE 901  
 REMITAL HOLLYWOOD 37H (CHB)  
 DRF LASERS MAGICAL MIST

| CE   | BW  | WW | YW | MM | M&G | SC  | REA  | MARB |
|------|-----|----|----|----|-----|-----|------|------|
| -0.5 | 3.8 | 53 | 85 | 17 | 43  | 0.8 | 0.41 | 0.07 |

- Consigned by Lowderman Cattle Co.
- Act. BW 75 lb.; adj. 205-day wt. 649 lb., ratio 100; adj. 365-day wt. 1,175, ratio 100
- A calving ease sire that offers extra body and do-ability. He's super sound structured with added width throughout. His mother is a beautifully uddered female that's very hard working. Here is an older bull that's ready to go to work.

# 16 SW REVOLUTION 1010

Bull

P43226512 — Calved: Sept. 1, 2010 — Tattoo: BE 1010 — Polled



FELTONS LEGEND 242 (SOD,CHB){HYF}  
 MSU TCF REVOLUTION 4R (CHB){DLF,HYF,IEF}  
 P42593689 MSU TCF RACHAEL ET 54N (DLF,HYF,IEF)

FELTONS DOMINO 774 (SOD,CHB){DLF,HYF,IEF}  
 FELTONS G15  
 REMITAL ONLINE 122L (SOD,CHB){DLF,HYF,IEF}  
 HH MISS ADV 786G 1ET

LAGRAND RELOAD 80P ET (CHB){DLF,HYF,IEF}  
 JCA CHICKLETS LOAD  
 P42840295 JCA WARRIOR CHICK 5165

AA PRF WIDELOAD  
 TSF MS KEYNOTE 729  
 RAFTER O APACHE SUN 333N  
 RAFTER O LADY BLAIR 232M

| CE   | BW  | WW | YW | MM | M&G | SC  | REA  | MARB |
|------|-----|----|----|----|-----|-----|------|------|
| -1.1 | 4.1 | 57 | 95 | 24 | 52  | 0.8 | 0.58 | 0.09 |

- Consigned by Sage Washburn
- Act. BW 80 lb.; adj. 205-day wt. 617 lb., ratio 100; adj. 365-day wt. 1,218 lb., ratio 100
- Naturally thick and dark red with a clean sheath and lots of eye pigment.



Lot 17 — MGF Yegor 101Y ET

## 17 MGF YEGOR 101Y ET

Bull

P43192148 — Calved: Jan. 2, 2011 — Tattoo: BE 101Y — Polled



DJB 5F VICTOR 11K  
 DJB CMR CALLAWAY 11N  
 P42383827 DJB 46B BETH 1L (DLF,HYF,IEF)

MSU WNH FELTON 5F (CHB)  
 DJB X4 MAY 27G (DOD)  
 REMITALL BOOMER 46B (SOD,CHB)(DLF,HYF,IEF)  
 PW VICTORIA 964 8114

HH HUNTER 492M  
 GLM 492M SENORA G 409 (DLF,HYF,IEF)  
 P42498954 DCF SENORA VAQUERO D765

MOHICAN HUNTER 57H (SOD,CHB)  
 RJ ROSE 80J  
 S&S VAQUERO 28F (SOD)  
 DCF GROOM'S GIRL D959

| CE  | BW  | WW | YW | MM | M&G | SC  | REA  | MARB |
|-----|-----|----|----|----|-----|-----|------|------|
| 0.0 | 3.6 | 52 | 82 | 14 | 40  | 0.6 | 0.49 | 0.03 |

- Consigned by Maple Glen Farm
- BW 76 lb.; adj. 205-day wt. 696 lb.; adj. 365-day wt. 1,386 lb.
- You might remember this calf from State Fair. He is out of a donor cow, "Skittles," from Nelson Herefords in Nebraska and sired by Callaway. This calf hit the ground running, starting at 76 lb. and weighing 1,195 lb. on Nov. 24. He has a massive top and lots of thickness. He has a nice shoulder for easy calving and the pedigree to be something great.



Lot 18 — PHH PCC 844 Revolution 109

## 18 PHH PCC 844 REVOLUTION 109

Bull

P43208194 — Calved: Jan. 8, 2011 — Tattoo: LE 109/RE PHH — Scurred



FELTONS LEGEND 242 (SOD,CHB)(HYF)  
 MSU TCF REVOLUTION 4R (CHB)(DLF,HYF,IEF)  
 P42593689 MSU TCF RACHAEL ET 54N (DLF,HYF,IEF)

FELTONS DOMINO 774 (SOD,CHB)(DLF,HYF,IEF)  
 FELTONS G15  
 REMITALL ONLINE 122L (SOD,CHB)(DLF,HYF,IEF)  
 HH MISS ADV 786G 1ET

CS BOOMER 29F (SOD,CHB)(DLF,HYF,IEF)  
 PHH PCC 083 JENELLE 844 ET  
 P42897386 PHH MADAME MATRIX 083

REMITALL BOOMER 46B (SOD,CHB)(DLF,HYF,IEF)  
 CS MISS 1ST FLAG 21A (DOD)(DLF,IEF)  
 KFF MATRIX H155  
 PHH VICTRA 116D 777

| CE  | BW  | WW | YW | MM | M&G | SC  | REA  | MARB |
|-----|-----|----|----|----|-----|-----|------|------|
| 3.5 | 2.0 | 57 | 91 | 24 | 53  | 0.8 | 0.59 | 0.10 |

- Consigned by Pierce's Hereford Haven
- Act. BW 86 lb.; adj. 205-day wt. 734 lb., ratio 110
- Everything considered, 109 is our top bull born in 2011. He has a BW ratio of 91 and WW ratio of 110. He is in the top 10% or better on six measurable traits and they are the ones that count: CE, WW, YW, M&G, REA and CHB\$. It all adds up.



Lot 19 — PHH PCC 651 Jagger 110

19

**PHH PCC 651 JAGGER 110**

Bull

P43210549 — Calved: Jan. 10, 2011 — Tattoo: LE 110/RE PHH — Polled



STAR BRIGHT FUTURE 533P ET (CHB)(DLF,HYF,IEF) REMITALL ONLINE 122L (SOD,CHB)(DLF,HYF,IEF)  
 STAR TCF SHOCK & AWE 158W ET (DLF,HYF,IEF) RB L1 DOMINETTE 8116  
 P42971547 MSU APOLLONIA 10M (DLF,HYF,IEF) SHF INTERSTATE 20X D03 (SOD,CHB)  
 APOLLONIA OF BAR B 748

PVF BOOMERANG 064  
 PHH 064 EXOTIC 651  
 P42713265 PHH VICTORIA 245

CS BOOMER 29F (SOD,CHB)(DLF,HYF,IEF)  
 PVF MS WORTHY 494 783  
 PHH NUFF SAID VIC 042  
 PHH VICTRA 610

| CE   | BW  | WW | YW | MM | M&G | SC  | REA  | MARB  |
|------|-----|----|----|----|-----|-----|------|-------|
| -3.9 | 3.6 | 45 | 72 | 20 | 43  | 0.6 | 0.24 | -0.05 |

- Consigned by Pierce's Hereford Haven
- Act. BW 92 lb.; adj. 205-day wt. 660 lb., ratio 99
- Son of 2-time Denver Supreme Champion Shock & Awe, Jagger is very eye-appealing. He is moderate framed with about as much red meat as he can carry. Thick top, bold rib and a big butt, yet sharp fronted with a nice head and neck set. A real beef bull.



Lot 20 — LCC Typhoon 106

20

**LCC TYPHOON 106**

Bull

43187589 — Calved: Jan. 12, 2011 — Tattoo: LE 106 — Horned



BR MOLER ET (CHB)(DLF,IEF) REMITALL ONLINE 122L (SOD,CHB)(DLF,HYF,IEF)  
 LCC TSUNAMI ET (DLF,IEF) DM L1 DOMINETTE 820  
 P42901159 MCR 552 GOLD MARKETTE 413 ET CJH L1 DOMINO 552 (SOD)(DLF,IEF)  
 C MS GOLD RUSH 97030

SSF 8619 EMBRACER 043  
 LCC 043 MERRY 579  
 P42674604 MSU BR MERRY 24K

H 8E EMBRACER 8006 (CHB)  
 TOP MSU MS 15G 8619  
 MSU STAR DR HEADMASTER  
 MSU MERRY 15G ET

| CE  | BW  | WW | YW | MM | M&G | SC  | REA  | MARB  |
|-----|-----|----|----|----|-----|-----|------|-------|
| 0.4 | 3.6 | 51 | 81 | 20 | 45  | 0.7 | 0.56 | -0.07 |

- Consigned by Lowderman Cattle Co.
- Act. BW 80 lb.; adj. 205-day wt. 724 lb., ratio 104
- A herd sire candidate with added length and performance. He's packed full of meat and muscle with a great look about him. His dam is a consistent producer that stems from our Merry 24K donor. A true genetic enhancer!



Lot 21 — MSF Mayhem 7Y ET

## 21 MSF MAYHEM 7Y ET

Bull

P43214816 — Calved: Jan. 14, 2011 — Tattoo: LE 7Y/RE MSF — Polled



GOLDEN-OAK FUSION 3S  
GOLDEN OAK OUTCROSS 18U (DLF,HYF,IEF)  
P42963135 GOLDEN-OAK 60D MALLORY 15M

GOLDEN-OAK 4J MAXIUM 28M (CHB)(DLF,HYF,IEF)  
NCX MISS JR NELLIE 528N  
RU DUSTER 60D (CHB)  
GOLDEN-OAK P183 GLORIA 25G

HUTH 7E ENHANCER J085  
J&J J085 ENHANTRESS L071  
P42196359 RRH MS FELT 8007

HUTH ENHANCER 2D (SOD)(DLF,HYF,IEF)  
HUTH CANDY B22 7E  
FELTONS LUTE 680 (CHB)(DLF,HYF,IEF)  
RRH MS FEL 6043

| CE   | BW  | WW | YW  | MM | M&G | SC  | REA  | MARB |
|------|-----|----|-----|----|-----|-----|------|------|
| -0.2 | 3.6 | 63 | 104 | 15 | 46  | 1.3 | 0.47 | 0.23 |

- Consigned by Mike Sorensen Family
- BW 92 lb.; adj. 205-day wt. 853 lb.
- Possibly the best ever by our L071 donor cow. Look closely at his weaning and yearling EPDs. More impressive are his style and phenotype. A breed improver.



Lot 22 — BH Solid Oak 02Y ET

## 22 BH SOLID OAK 02Y ET

Bull

43232884 — Calved: Jan. 17, 2011 — Tattoo: LE 02Y — Horned



GOLDEN-OAK FUSION 3S  
GOLDEN OAK OUTCROSS 18U (DLF,HYF,IEF)  
P42963135 GOLDEN-OAK 60D MALLORY 15M

GOLDEN-OAK 4J MAXIUM 28M (CHB)(DLF,HYF,IEF)  
NCX MISS JR NELLIE 528N  
RU DUSTER 60D (CHB)  
GOLDEN-OAK P183 GLORIA 25G

C -S PURE GOLD 98170 (SOD,CHB)(DLF,IEF)  
BH GOLD STAR 18R ET (DLF,IEF)  
P42642554 MSU BR KEY M ARKETTE 100K

C GOLD RUSH 1ET  
C MS DOM 93218 1ET  
REMITALL KEYNOTE 20X (SOD,CHB)  
BR ARKETTE 2009 (DOD)

| CE   | BW  | WW | YW  | MM | M&G | SC  | REA  | MARB |
|------|-----|----|-----|----|-----|-----|------|------|
| -3.8 | 5.4 | 65 | 104 | 21 | 53  | 1.2 | 0.81 | 0.05 |

- Consigned by Benedict Herefords
- Act. BW 89 lb.; 205-day wt. 656 lb.
- This young herd bull prospect is by one of the hottest sires in the breed. Twelve half-sisters just averaged over \$20,000 in the Hoffman sale. This is an easy, smooth tracking bull with more than adequate length and thickness, yet very smooth in his shoulders. See video at [www.benedicttherefords.com](http://www.benedicttherefords.com).
- Selling ¾ interest and full possession.



Lot 23 — DEP Sudden Impact ET

## 23 DEP SUDDEN IMPACT ET

Bull

43182833 — Calved: Jan. 17, 2011 — Tattoo: LE DEP17 — Horned



THM DURANGO 4037 (CHB)(DLF,HYF,IEF)  
 CRR ABOUT TIME 743 (CHB)(DLF,HYF,IEF)  
 P42797564 CRR D03 CASSIE 206

CS BOOMER 29F (SOD,CHB)(DLF,HYF,IEF)  
 THM 7085 VICTRA 9036 (DLF,HYF,IEF)  
 SHF INTERSTATE 20X D03 (SOD,CHB)  
 CRR 475E CASSIE 838

SLDK POSEIDON R09 ET  
 SLDK MISS POSEIDON T16 ET (DLF,HYF,IEF)  
 P42863741 SHF LADY 512 G10 ET

ANKONIAN MIDAS 72  
 H MISS 19D BELLE 9029  
 MM RSM STOCKMASTER 512 (SOD,CHB)(DLF,HYF,IEF)  
 SHF MS JUSTN 7115J Z24 (DOD)

| CE  | BW  | WW | YW | MM | M&G | SC  | REA  | MARB |
|-----|-----|----|----|----|-----|-----|------|------|
| 1.9 | 3.3 | 49 | 76 | 18 | 43  | 0.8 | 0.42 | 0.11 |

- Consigned by WEBCows Deppe Bros.
- BW 82 lb.; adj. 205-day wt. 769 lb.
- DEP Sudden Impact is sired by About Time 743 and a full brother to our DEP Good & Plenty that has three champion titles already as a junior bull. He has been shown twice and placed second in class to his full sib at the Iowa State Fair and the American Royal Hereford Show. This bull is more moderate in his type with length and depth. He's a darn good bull!
- Full sister sells as Lot 40.



Lot 24 — TFL DHF Classified Y3

## 24 TFL DHF CLASSIFIED Y3

Bull

P43167680 — Calved: Jan. 26, 2011 — Tattoo: LE TLY3 — Polled



FELTONS LEGEND 242 (SOD,CHB)(HYF)  
 MSU TCF REVOLUTION 4R (CHB)(DLF,HYF,IEF)  
 P42593689 MSU TCF RACHAEL ET 54N (DLF,HYF,IEF)

FELTONS DOMINO 774 (SOD,CHB)(DLF,HYF,IEF)  
 FELTONS G15  
 REMITTALL ONLINE 122L (SOD,CHB)(DLF,HYF,IEF)  
 HH MISS ADV 786G 1ET

EFBEEF SCHU-LAR PROFICIENT N093 (CHB)(DLF,HYF,IEF)  
 SCHU-LAR 4U OF 9S N093  
 P42893353 SCHU-LAR 9S JUNE M48 5N

BAR JZ TRADITION 434V (SOD)(DLF,HYF,IEF)  
 GERBER 117F DIXIE 009K  
 SCHU-LAR 5N OF 9L 3008 (CHB)(HYF)  
 FELTONS JUNE M48 (DOD)

| CE  | BW  | WW | YW  | MM | M&G | SC  | REA  | MARB |
|-----|-----|----|-----|----|-----|-----|------|------|
| 3.8 | 2.4 | 64 | 101 | 23 | 55  | 1.2 | 0.58 | 0.23 |

- Consigned by Doss Hereford Farms and Tom Luthy
- Act. BW 70 lb.; adj. 205-day wt. 698, ratio 112
- If you want a bull with numbers, he has arrived. This calf stacks several generations in his pedigree and is sired by the famous Revolution bull. He has tremendous potential and you will like the profile and solid markings this bull presents. Calving ease, performance, milk and carcass fly to the right of his chart. BIG numbers on this bull.



Lot 25 — SS Time Machine 03Y

**25**

**SS TIME MACHINE 03Y**

Bull

43207721 — Calved: Jan. 31, 2011 — Tattoo: BE 03Y — Horned



THM DURANGO 4037 (CHB)(DLF,HYF,IEF)  
 CRR ABOUT TIME 743 (CHB)(DLF,HYF,IEF)  
 P42797564 CRR D03 CASSIE 206

CS BOOMER 29F (SOD,CHB)(DLF,HYF,IEF)  
 THM 7085 VICTRA 9036 (DLF,HYF,IEF)  
 SHF INTERSTATE 20X D03 (SOD,CHB)  
 CRR 475E CASSIE 838

PW VICTOR BOOMER P606 (SOD)(DLF,HYF,IEF)  
 SS VICKIE 12R  
 42611163 HHR MISS BESS 614

REMITALL BOOMER 46B (SOD,CHB)(DLF,HYF,IEF)  
 PW VICTORIA 964 8114  
 WS BULLS EYE (SOD,CHB)  
 HHR MISS SECURE 803

| CE   | BW  | WW | YW | MM | M&G | SC  | REA  | MARB |
|------|-----|----|----|----|-----|-----|------|------|
| -0.8 | 4.3 | 52 | 79 | 21 | 47  | 0.7 | 0.54 | 0.16 |

- Consigned by *Stickley & Sons Herefords*
- Act. BW 90 lb.
- Extremely wide and deep-ribbed in a moderate framed package. He will add quality and marketability to your next calf crop. Great disposition.

**26**

**MDF YELK 26Y**

Bull

P43236074 — Calved: Feb. 12, 2011 — Tattoo: LE MDF 26Y — Polled



DRF JWR PRINCE VICTOR 711 (CHB)  
 KJ C&L J119 LOGIC 023R ET (CHB)(DLF,HYF,IEF)  
 P42588968 SHF INTERSTATE D03 J119

HRP THM VICTOR 109W 9329 (SOD)  
 RHF 964 VICTRA 4057  
 SHF INTERSTATE 20X D03 (SOD,CHB)  
 SHF LADY 512 G07 ET

BR DM CHANNING ET (CHB)(DLF,IEF)  
 MDF MISS VENUS 10U  
 P42949843 MDF MISS NOVA 18N

REMITALL ONLINE 122L (SOD,CHB)(DLF,HYF,IEF)  
 DM L1 DOMINETTE 820  
 REMITALL JONATHON 73J (CHB)  
 MDF MISS KESS 12H

| CE   | BW  | WW | YW | MM | M&G | SC  | REA  | MARB |
|------|-----|----|----|----|-----|-----|------|------|
| -0.1 | 4.9 | 61 | 99 | 16 | 46  | 0.4 | 0.57 | 0.04 |

- Consigned by *Mike Dierenfeld Family Polled Herefords*
- Act. BW 96 lb.; adj. 205-day wt. 625 lb.
- Level top, extremely smooth shoulder.

**27**

**OSF STUD MUFFIN 21I**

Bull

P43191354 — Calved: Feb. 17, 2011 — Tattoo: BE 211 — Polled



SHF MARSHAL 236G M33 (SOD,CHB)  
 FHF M33 MARSHALL DILLON 118TET (DLF,IEF)  
 P42871312 FHF 614R NATES LADY 3M

REMITALL GOVERNOR 236G (SOD,CHB)  
 SHF MISS KEYNOTE 20X E39 (DOD)  
 BEARTOOTH BUTLER 614R  
 FHF 10G NATE'S LADY 90K

AH ONLINE TRADITION 11P  
 DH ON TO TARA 570 (DOD)  
 P42689761 DH SILVER WINGS 733 (DOD)

REMITALL ONLINE 122L (SOD,CHB)(DLF,HYF,IEF)  
 AH MISS TRADITION 18K (DOD)  
 BAR JZ ECLIPSE 930H (SOD,CHB)  
 DH GOLDEN TARA 300

| CE  | BW  | WW | YW | MM | M&G | SC  | REA  | MARB  |
|-----|-----|----|----|----|-----|-----|------|-------|
| 0.0 | 4.9 | 58 | 94 | 25 | 54  | 0.7 | 0.31 | -0.01 |

- Consigned by *Owego Stock Farm*
- Act. BW 90 lb.; adj. 205-day wt. 717 lb., ratio 127
- Out of a Dam of Distinction, 211 was a herd sire the day he was born. The family nicknamed him "Stud Muffin." He is our high performance bull for the year. He is conservatively marked and red to the ground including testicles. Long-bodied, smooth shouldered, good boned and correct, he should be an asset for any beef operation.





Lot 28 — ABRA 743 Prince Albert 16Y

**28**

**ABRA 743 PRINCE ALBERT 16Y**

**Bull**

P43172105 — Calved: Feb. 19, 2011 — Tattoo: LE 16Y/RE ABRA — Polled



THM DURANGO 4037 (CHB)(DLF,HYF,IEF)  
 CRR ABOUT TIME 743 (CHB)(DLF,HYF,IEF)  
 P42797564 CRR D03 CASSIE 206

CS BOOMER 29F (SOD,CHB)(DLF,HYF,IEF)  
 THM 7085 VICTRA 9036 (DLF,HYF,IEF)  
 SHF INTERSTATE 20X D03 (SOD,CHB)  
 CRR 475E CASSIE 838

NJW FHF 9710 TANK 45P (CHB)(DLF,HYF,IEF)  
 ANL 45P VICTORIA 94U (DLF,HYF,IEF)  
 P43163618 WSF MISS VICTOR 532

FHF 8403 STARBUCK 19H (CHB)  
 GV 579 VICTORIA 9710  
 PW VICTOR BOOMER P606 (SOD)(DLF,HYF,IEF)  
 WSF LADY GLORIA 384

| CE  | BW  | WW | YW | MM | M&G | SC  | REA  | MARB |
|-----|-----|----|----|----|-----|-----|------|------|
| 1.3 | 3.9 | 57 | 85 | 23 | 51  | 1.0 | 0.70 | 0.08 |

- Consigned by *AbraKadabra Cattle Co.*
- Act. BW 98 lb.; adj. 205-day wt. 765 lb., ratio 105
- This February About Time calf is an attractive, stout made, clean-fronted calf out of one of our top donors purchased from ANL. He just keeps getting better with age. Balanced EPDs. We have shown him successfully this summer and fall, most recently at NAILE where he was named reserve bull calf champion.

**29**

**BG 743 SURE TIME 32Y**

**Bull**

P43193587 — Calved: Feb. 20, 2011 — Tattoo: RE 32Y — Polled



THM DURANGO 4037 (CHB)(DLF,HYF,IEF)  
 CRR ABOUT TIME 743 (CHB)(DLF,HYF,IEF)  
 P42797564 CRR D03 CASSIE 206

CS BOOMER 29F (SOD,CHB)(DLF,HYF,IEF)  
 THM 7085 VICTRA 9036 (DLF,HYF,IEF)  
 SHF INTERSTATE 20X D03 (SOD,CHB)  
 CRR 475E CASSIE 838

MB CATTAIL MASTERKEY 057K  
 BG 057 MINDY SUE 720  
 P42852666 BG VAQUERO DOC 813

REMITALL KEYNOTE 20X (SOD,CHB)  
 PVF HIGH HOPE 306  
 WRB JJ VAQUERO 36  
 BG 208 KATIE 604

| CE  | BW  | WW | YW | MM | M&G | SC  | REA  | MARB |
|-----|-----|----|----|----|-----|-----|------|------|
| 1.8 | 3.1 | 50 | 77 | 18 | 43  | 0.8 | 0.42 | 0.10 |

- Consigned by *Bill Goehring*
- BW 90; adj. 205-day wt. 695 lb., ratio 98
- Sired by About Time, one of the very consistent breeding bulls of the breed, 32Y is very thick with lots of volume and rib. This bull's dam has the ideal udder and nice small teats. He will sire the kind of uniformity into a set of cows that you will sure like.

**Breed Avg. EPDs for 2010 Born Calves**

| CE  | BW  | WW | YW | MM | M&G | MCE | MCW | SC  | FAT   | REA  | MARB | BMI\$ | CEZ\$ | BIIS | CHBS |
|-----|-----|----|----|----|-----|-----|-----|-----|-------|------|------|-------|-------|------|------|
| 0.4 | 3.6 | 44 | 73 | 17 | 39  | 0.9 | 85  | 0.7 | 0.001 | 0.25 | 0.04 | 17    | 15    | 15   | 20   |

EPDs in the top 35% of the breed are highlighted in yellow.



Lot 30 — PRF 3510 Hard Hat 96Y

**30 PRF 3510 HARD HAT 96Y**

**Bull**

P43192425 — Calved: Feb. 22, 2011 — Tattoo: LE 96Y/RE PRF — Polled



**PW VICTOR BOOMER P606** (SOD)(DLF,HYF,IEF)  
**AB JWR DEMOLITION 6008 3510** (CHB)  
 P42476821 **THM LASSIE DOMINO 6008**

**REMITALL BOOMER 46B** (SOD,CHB)(DLF,HYF,IEF)  
**PW VICTORIA 964 8114**  
**THM VICTOR DOM 287**  
**THM VICTORIA 109W 9319**

**RU DUSTER 60D** (CHB)  
**RHF 8037 TANK 8001U ET** (DLF,HYF,IEF)  
 P42906321 **THM 5048 VICTRA 8037** (DOD)

**REMITALL KEYNOTE 20X** (SOD,CHB)  
**RU SARA 60X**  
**BTF CONNECTION 540 5048**  
**THM VICTRA DOM 320 5016**

| CE   | BW  | WW | YW | MM | M&G | SC  | REA  | MARB |
|------|-----|----|----|----|-----|-----|------|------|
| -1.7 | 4.0 | 51 | 81 | 21 | 46  | 0.6 | 0.55 | 0.10 |

- Consigned by Phillips-Renner Farms
- Act. BW 88 lb.
- Hard Hat is a balanced, complete made son of Demolition. He is deep-flanked, dark red and travels well off both ends. His sire worked very well at JWR and in other herds across the country. His dam is a good uddered 3-year-old who continues to impress us. Whether you are looking to produce high quality females or bulls, Hard Hat is the bull for you! More information at [www.prfherefords.com](http://www.prfherefords.com).

**31 DOUBLE K ELE3CTRIC DK119**

**Bull**

P43186669 — Calved: March 2, 2011 — Tattoo: RE K119 — Polled



**LAGRAND RELOAD 80P ET** (CHB)(DLF,HYF,IEF)  
**DOUBLE K OZZIE DK36** (DLF,IEF)  
 P42831029 **STAR ORALEE DOMINETTE 502P ET** (DLF,IEF)

**AA PRF WIDELOAD**  
**TSF MS KEYNOTE 729**  
**REMITALL ONLINE 122L** (SOD,CHB)(DLF,HYF,IEF)  
**RCH L1 DOMINETTE 2004**

**R&R JAVA JACK 67J**  
**DOUBLE K ERENA 34P**  
 42475916 **R&R ERRIN STYLE 34J**

**SHO 434V STYLE 9G**  
**R&R GAIL PROSPECT 36H**  
**SHO 434V STYLE 9G**  
**R&R ERRIN RYDER**

| CE   | BW  | WW | YW | MM | M&G | SC  | REA  | MARB  |
|------|-----|----|----|----|-----|-----|------|-------|
| -2.6 | 5.8 | 45 | 78 | 15 | 37  | 0.7 | 0.19 | -0.06 |

- Consigned by Double K Herefords
- Act. BW 85 lb.; adj. 205-day wt. 576 lb., ratio 107
- A favorite herd bull prospect since he was born — deep-bodied and sound muscled. With a gentle disposition, he will make a great bull for anyone's herd.

**32 SOLSMA YAEGER 811**

**Bull**

P43173585 — Calved: March 4, 2011 — Tattoo: BE 811 — Polled



**THM DURANGO 4037** (CHB)(DLF,HYF,IEF)  
**CRR ABOUT TIME 743** (CHB)(DLF,HYF,IEF)  
 P42797564 **CRR D03 CASSIE 206**

**CS BOOMER 29F** (SOD,CHB)(DLF,HYF,IEF)  
**THM 7085 VICTRA 9036** (DLF,HYF,IEF)  
**SHF INTERSTATE 20X D03** (SOD,CHB)  
**CRR 475E CASSIE 838**

**HH HUNTER K849**  
**SOLSMA SANDY JANE 806 ET**  
 P42686009 **CAROL LUCY FELT 25C 9603**

**MOHICAN HUNTER 57H** (SOD,CHB)  
**RH DOMINETTE 5085**  
**III FLEX 38A 25C**  
**GAY LUCY FELTONS 9207**

| CE  | BW  | WW | YW | MM | M&G | SC  | REA  | MARB |
|-----|-----|----|----|----|-----|-----|------|------|
| 1.0 | 3.7 | 47 | 75 | 15 | 39  | 0.9 | 0.40 | 0.12 |

- Consigned by Solsma Show Steers
- Act. BW 84 lb.; adj. 205-day wt. 610 lb.
- A thick-made yearling with a great pedigree and EPDs. This bull's full brother is selling as Lot 6. Here's a chance to buy two full brothers for consistency in your calf crop. The dam of this yearling is a full sister to the 2004 American Royal Grand Champion Female. If structure and balance are important to your herd, take a long look at this one.



Lot 33 — JJB Forrest 5Y

33

**JJB FORREST 5Y**

Bull

P43210552 — Calved: March 8, 2011 — Tattoo: LE 5Y/RE JJB — Polled



HCC LEGACY S01 ET (DLF,HYF,IEF)  
P42697758 CF MISS LEGEND 23N ET

REMITALL ONLINE 122L (SOD,CHB){DLF,HYF,IEF}

REMITALL EMBRACER 8E (SOD,CHB){HYF}  
REMITALL CATALINA 24H  
DS KCK LEGEND 10J  
SALUNGA BONITA 133H

STAR JJB LADY 374T  
P42822392 STAR JB LADY NANNA 184R ET

HB STAR BATTLE GROUND 2013 (DLF,HYF,IEF)

C-S PURE GOLD 98170 (SOD,CHB){DLF,IEF}  
MSU MISS WRANGLER 61J  
REMITALL ONLINE 122L (SOD,CHB){DLF,HYF,IEF}  
STAR JUDY HCF 322J

| CE  | BW  | WW | YW | MM | M&G | SC  | REA  | MARB |
|-----|-----|----|----|----|-----|-----|------|------|
| 0.9 | 4.5 | 50 | 89 | 20 | 45  | 1.0 | 0.46 | 0.13 |

- Consigned by JJB Cattle Co.
- Act. BW 86 lb.; adj. 205-day wt. 669, ratio 105
- Forrest is a bull with plenty of depth and style in a sound package. This Legacy son is a ¾ sib to the Grind bull that was one of the top sellers in last year's sale. Forrest is the real deal and is just as visually pleasing in the flesh as when you look at him on paper — just take a look at those EPDs! Visit [www.jjbcattle.com](http://www.jjbcattle.com) for updated pictures as well as a video.



Lot 34 — STAR KKH SSF Keyja'Vu 300U ET

34

**STAR KKH SSF KEYJA'VU 300U ET**

Cow

P42873323 — Calved: March 1, 2008 — Tattoo: LE 300U/RE STAR — Polled



NJW 1Y WRANGLER 19D (SOD,CHB){HYF}  
P23758169 NJW FROSTY 1Y

CIRCLE-D WRANGLER 832W (SOD,CHB){HYF}

BAR H L1 CHANGE 55S  
CRCLE D193 SILHOUET 335S  
BT JR QUESTER 604M (SOD){DLF,HYF,IEF}  
NJW P183 003 NICKETTE 1W

REMITALL KEYNOTE 20X (SOD,CHB)  
SSF KEYSHA 949 (DLF,HYF,IEF)  
P42050404 TOP MSU MS 15G 8619

REMITALL TEAMSTER 9T  
REMITALL PATRICIA 99P  
BT CL DOMINO 15G (SOD)  
TOP MIS GILEAD TREND

| CE  | BW  | WW | YW | MM | M&G | REA  | MARB  |
|-----|-----|----|----|----|-----|------|-------|
| 1.6 | 4.1 | 47 | 83 | 18 | 41  | 0.75 | -0.08 |

- Consigned by M&M Herefords
- Adj. 205-day wt. 617 lb.; adj. 365-day wt. 806 lb.
- Keyja'Vu is out of the well-known Keysha, whose legend continues to leave its identity throughout the industry. This young cow will make a great donor cow. She has that "look" about her that makes her the front pasture "mama cow" kind.
- Bred AI Aug. 4, 2011, to STAR TCF Shock & Awe 158W ET. Safe in calf. This mating has the potential of producing a future champion.

FEMALES

**35****MSF SR MISS ANGLE 39W ET**

Cow

P43024522 — Calved: Jan. 21, 2009 — Tattoo: LE 39W/RE MSF — Polled



AA PRF WIDELOAD  
WIDE ANGLE STC 01  
P42746345 GEF DRIVING MS DAISY 2065

AA BOOMER 611  
PRF MS SCARLETT 919  
C&M HARD DRIVE 620  
GEFN 804 MISSY 9734

HUTH 7E ENHANCER J085  
J&J J085 ENHANTRESS L071  
P42196359 RRR MS FELT 8007

HUTH ENHANCER 2D (SOD)(DLF,HYF,IEF)  
HUTH CANDY B22 7E  
FELTONS LUTE 680 (CHB)(DLF,HYF,IEF)  
RRH MS FEL 6043

| CE   | BW  | WW | YW | MM | M&G | REA  | MARB |
|------|-----|----|----|----|-----|------|------|
| -0.1 | 2.5 | 52 | 86 | 17 | 43  | 0.03 | 0.20 |

- Consigned by Mike Sorensen Family and Brady Edge
- A complete package — phenotypically perfect and safe to SLDK Vendetta. This could be the perfect mating.
- Bred AI June 15, 2011, to SLDK Vendetta V09 ET. Due to calve March 24, 2012.

**36****W W SERENA**

Cow

P43051469 — Calved: June 11, 2009 — Tattoo: LE 52 V — Polled



RRH MR FELT 3008 (SOD,CHB)(DLF,HYF,IEF)  
KCF BENNETT 3008 M326 (CHB)(DLF,HYF,IEF)  
P42361822 KCF MISS 459 F284

FELTONS 517 (SOD,CHB)(HYF)  
RRH MS VICT 6191  
FELTONS 459  
KCF MISS X4 B156

S&S DRF KJ CATTLEMAN 49H  
SCF MS CANDIE CATTLEMAN 746  
P42256264 KJ CANDIE 746F (DOD)

VCR EAST KODIAK 506E (SOD,CHB)(DLF,HYF,IEF)  
S&S LADY LAMP 467B (DOD)  
MILLVALLEY 3Z CONTRL 20C (SOD)  
KJ FAVORITE DOLL 332B

| CE   | BW  | WW | YW | MM | M&G | REA  | MARB |
|------|-----|----|----|----|-----|------|------|
| -0.4 | 4.6 | 53 | 86 | 13 | 39  | 0.52 | 0.14 |

- Consigned by White Willow Polled Herefords
- Act. BW 89 lb.; adj. 205-day wt. 521 lb., ratio 99
- Joe Rickabaugh picked Serena out of a dozen bred heifers offered because she is stout made and is a powerhouse in carcass value. EPDs: Top 15% in WW, 18% in YW, 5% in REA, 18% in MARB.
- Exposed July 1 to Sept. 1, 2011, to NJW 43T 4037 Everready 9X ET. Due to calve May 1, 2012.

**37****BIGGS 735 TICKLES N19 X10**

Cow

P43091082 — Calved: Feb. 26, 2010 — Tattoo: LE X10 — Polled



REMITALL PATRIOT ET 13P (CHB)(DLF,HYF,IEF)  
WPHF PRM KP TICKER 13P 16M 735  
P42804910 DJB 9104 VICTORIA 16M

REMITALL OLYMPIAN ET 262L (CHB)  
REMITALL GINGER 23G (DLF,HYF,IEF)  
PW NICK 9104 (SOD)  
BOTKINS VICTORIA 564 811

BPH EXPLOSION 14F  
BIGGS 14F MS EXCITMENT E11 N19  
P42394328 BIGGS GENETIC MS C7 E11

REMITALL KEYNOTE 20X (SOD,CHB)  
BPH MS HL1K BAN DOM  
GK GENETIC EXPLOSION (SOD,CHB)(DLF,HYF,IEF)  
BPH MS BEAU DONNA 13Z C7

| CE   | BW  | WW | YW | MM | M&G | REA  | MARB |
|------|-----|----|----|----|-----|------|------|
| -2.8 | 3.5 | 44 | 70 | 16 | 39  | 0.21 | 0.09 |

- Consigned by Biggs Polled Herefords
- Adj. BW 85 lb.; adj. 205-day wt. 625 lb., ratio 100; adj. 365-day wt. 858 lb., ratio 100
- X10 will be all cow just like her dam and grandam. We love our Ticker daughters. They are all moderate framed, easy-keeping females. The Remitall-Victor cross always seems to work.
- Bred AI May 19, 2011, to THM Durango 4037, then pasture exposed June 15 to Aug. 28, 2011, to RRO TRM Heritage 0043 ET. Believed to be safe to Durango.

**38****PPH 80P PRECIOUS 003X**

Cow

43141171 — Calved: June 9, 2010 — Tattoo: LE 003X — Horned



AA PRF WIDELOAD  
LAGRAND RELOAD 80P ET (CHB)(DLF,HYF,IEF)  
P42539056 TSF MS KEYNOTE 729

AA BOOMER 611  
PRF MS SCARLETT 919  
REMITALL KEYNOTE 20X (SOD,CHB)  
BTF MS FORAGE 109W 9001

WTK 55Y BOND 75A (SOD)(DLF,HYF,IEF)  
PPH 75A BONITA 601F  
P23948599 PPH JUSTA TWIGGY 67K 1T

WTK 80U PREMIUM 55Y  
WTK 21N BLANCHE 28S  
STLBRK GILEAD 67K (SOD)  
MRF JUSTA ROSEY 13R

| CE   | BW  | WW | YW | MM | M&G | REA  | MARB  |
|------|-----|----|----|----|-----|------|-------|
| -5.1 | 5.0 | 47 | 83 | 21 | 45  | 0.61 | -0.05 |

- Consigned by Paul Polled Herefords
- Adj. BW 89 lb.; adj. 205-day wt. 746 lb., ratio 102; adj. 365-day wt. 1,080 lb., ratio 100
- Precious is probably the thickest heifer we have ever raised. We had intended to keep her since the day she was born, but decided to put her in the sale at the last minute. Note that she is bred to one of the great maternal bulls of the breed.
- Bred AI June 27, 2011, to NJW 1Y Wrangler 19D.



Lot 39 — MSF Miss Outcross 3Y ET

## 39 MSF MISS OUTCROSS 3Y ET

Cow

P43214814 — Calved: Jan. 11, 2011 — Tattoo: LE 3Y/RE MSF — Polled



GOLDEN-OAK FUSION 3S  
 GOLDEN OAK OUTCROSS 18U (DLF,HYF,IEF)  
 P42963135 GOLDEN-OAK 60D MALLORY 15M

GOLDEN-OAK 4J MAXIUM 28M (CHB)(DLF,HYF,IEF)  
 NCX MISS JR NELLIE 528N  
 RU DUSTER 60D (CHB)  
 GOLDEN-OAK P183 GLORIA 25G

HUTH 7E ENHANCER J085  
 J&J J085 ENHANTRESS L071  
 P42196359 RRH MS FELT 8007

HUTH ENHANCER 2D (SOD)(DLF,HYF,IEF)  
 HUTH CANDY B22 7E  
 FELTONS LUTE 680 (CHB)(DLF,HYF,IEF)  
 RRH MS FEL 6043

| CE   | BW  | WW | YW  | MM | M&G | REA  | MARB |
|------|-----|----|-----|----|-----|------|------|
| -0.2 | 3.6 | 63 | 104 | 15 | 46  | 0.47 | 0.23 |

- Consigned by Mike Sorensen Family
- BW 77 lb.; adj. 205-day wt. 736 lb.
- This is probably the deepest bodied daughter of our L071 donor and the famed Outcross bull. Excellent EPDs with that cow look. A breed leader!



Lot 40 — DEP Ms Iusabel T16 ET

## 40 DEP MS IUSABEL T16 ET

Cow

P43197940 — Calved: Jan. 13, 2011 — Tattoo: LE DEP13 — Polled



THM DURANGO 4037 (CHB)(DLF,HYF,IEF)  
 CRR ABOUT TIME 743 (CHB)(DLF,HYF,IEF)  
 P42797564 CRR D03 CASSIE 206

CS BOOMER 29F (SOD,CHB)(DLF,HYF,IEF)  
 THM 7085 VICTRA 9036 (DLF,HYF,IEF)  
 SHF INTERSTATE 20X D03 (SOD,CHB)  
 CRR 475E CASSIE 838

SLDK POSEIDON R09 ET  
 SLDK MISS POSEIDON T16 ET (DLF,HYF,IEF)  
 P42863741 SHF LADY 512 G10 ET

ANKONIAN MIDAS 72  
 H MISS 19D BELLE 9029  
 MM RSM STOCKMASTER 512 (SOD,CHB)(DLF,HYF,IEF)  
 SHF MS JUSTN 7115J Z24 (DOD)

| CE  | BW  | WW | YW | MM | M&G | REA  | MARB |
|-----|-----|----|----|----|-----|------|------|
| 1.9 | 3.3 | 49 | 76 | 18 | 43  | 0.42 | 0.11 |

- Consigned by WEBCows Deppe Bros.
- Act. BW 75 lb.; adj. 205-day wt. 697
- Ms Iusabel, a goggle-eyed polled heifer sired by About Time 743, is a full sib to our DEP Good & Plenty that has three champion titles already as a junior bull. She's attractive with bone, length, depth and awesome hair. This heifer has all the makings of a brood cow and will dominate the showing and anyone's program.
- Full brother sells as Lot 23.



Lot 41 — CPH Miss Enchantment 461Y

## 41 CPH MISS ENCHANTMENT 461Y Cow

P43189326 — Calved: Jan. 17, 2011 — Tattoo: LE 461Y/RE CPH — Polled



NJW 1Y WRANGLER 19D (SOD,CHB)(HYF) CIRCLE-D WRANGLER 832W (SOD,CHB)(HYF)  
 STAR MKS WESTERN WRANGLER SS (DLF,HYF,IEF) NJW FROSTY 1Y  
 P42357712 STAR MKS WESTERN STAR 55 (DLF,HYF,IEF) CS BOOMER 29F (SOD,CHB)(DLF,HYF,IEF)  
 WESTERN PLEASURE

BOYD FIRST CLASS 6040 (CHB)(DLF,HYF,IEF) DR WORLD CLASS 517 10H (SOD,CHB)(DLF,HYF,IEF)  
 STAR TCF CAPTIVATION 460U BOYD FASINATION 3009 (DOD)(DLF,IEF)  
 P42924407 REMITALL CATALINA ET 76M (DLF,HYF,IEF) REMITALL KEYNOTE 20X (SOD,CHB)  
 REMITALL CATALINA 24H

| CE  | BW  | WW | YW | MM | M&G | REA  | MARB |
|-----|-----|----|----|----|-----|------|------|
| 0.3 | 4.7 | 50 | 81 | 22 | 47  | 0.41 | 0.01 |

- Consigned by Casteel Polled Herefords
- Adj. BW 86 lb.; Adj. 205-day weight 651, ratio 100
- Don't pass up a good one! This January heifer is long and deep with lots of dimension and rib. She is bound to make a powerful cow, just like her momma. "Enchantment" is a Western Wrangler SS daughter out of a well-balanced, beautifully uddered 3-year-old Boyd First Class cow. This heifer is ready to breed. For more information, please visit [www.casteelpolledherefords.com](http://www.casteelpolledherefords.com).

## 42 MDF MISS YEDDA 18 Cow

P43236039 — Calved: Jan. 29, 2011 — Tattoo: LE MDF 18Y — Polled



FELTONS LEGEND 242 (SOD,CHB)(HYF) FELTONS DOMINO 774 (SOD,CHB)(DLF,HYF,IEF)  
 MSU TCF REVOLUTION 4R (CHB)(DLF,HYF,IEF) FELTONS G15  
 P42593689 MSU TCF RACHAEL ET 54N (DLF,HYF,IEF) REMITALL ONLINE 122L (SOD,CHB)(DLF,HYF,IEF)  
 HH MISS ADV 786G 1ET

REMITALL NATION WIDE ET 93N (CHB) REMITALL KEYNOTE 20X (SOD,CHB)  
 MDF MISS SOPHIE 8S REMITALL CATALINA 24H  
 P42731646 MDF MISS SHERYL 20N REMITALL BOOMER 46B (SOD,CHB)(DLF,HYF,IEF)  
 MSF MISS DOT 8G

| CE   | BW  | WW | YW  | MM | M&G | REA  | MARB |
|------|-----|----|-----|----|-----|------|------|
| -2.3 | 4.4 | 62 | 101 | 20 | 51  | 0.70 | 0.04 |

- Consigned by Mike Dierenfeld Family Polled Herefords
- Act. BW 75 lb.; adj. 205-day wt. 507 lb.
- A very feminine heifer, 18Y was the first choice of everyone who came to look at heifers this year.

### Breed Avg. EPDs for 2010 Born Calves

| CE  | BW  | WW | YW | MM | M&G | MCE | MCW | SC  | FAT   | REA  | MARB | BMI\$ | CEZ\$ | BI\$ | CHB\$ |
|-----|-----|----|----|----|-----|-----|-----|-----|-------|------|------|-------|-------|------|-------|
| 0.4 | 3.6 | 44 | 73 | 17 | 39  | 0.9 | 85  | 0.7 | 0.001 | 0.25 | 0.04 | 17    | 15    | 15   | 20    |

EPDs in the top 35% of the breed are highlighted in yellow.



Lot 43 — PHH PCC 527 Eva 129

**43**

**PHH PCC 527 EVA 129**

Cow

P43210556 — Calved: Feb. 10, 2011 — Tattoo: LE 129/RE PHH — Polled



STAR BRIGHT FUTURE 533P ET (CHB)(DLF,HYF,IEF)  
 STAR TCF SHOCK & AWE 158W ET (DLF,HYF,IEF)  
 P42971547 MSU APOLLONIA 10M (DLF,HYF,IEF)

REMITALL ONLINE 122L (SOD,CHB)(DLF,HYF,IEF)  
 RB L1 DOMINETTE 8116  
 SHF INTERSTATE 20X D03 (SOD,CHB)  
 APOLLONIA OF BAR B 748

NJW 79F BOULDER 36M  
 PHH 1L EVA 527 ET (DLF,IEF)  
 P42578957 CLF PEARL 1L

RU 20X BOULDER 57G (CHB)  
 NJW 42D LARIAT 79F  
 KJ SPH REVOLUTION 872G (SOD)  
 KFF FAIREST NORDICA 105J

| CE   | BW  | WW | YW | MM | M&G | REA  | MARB  |
|------|-----|----|----|----|-----|------|-------|
| -4.1 | 4.4 | 52 | 80 | 20 | 46  | 0.25 | -0.04 |

- Consigned by Pierce's Hereford Haven
- Act. BW 86 lb.; adj. 205-day wt. 622 lb., ratio 104
- A natural calf from our donor cow, Eva 527. This daughter of 2-time Denver Supreme Champion Shock & Awe is a double threat — top show prospect and sure thing front pasture cow. Eva 129 could be just what you have been searching for.



Lot 44 — MGF Yenay 102Y

**44**

**MGF YENAY 102Y**

Cow

P43190808 — Calved: Feb. 14, 2011 — Tattoo: BE 102Y — Polled



STAR BRIGHT FUTURE 533P ET (CHB)(DLF,HYF,IEF)  
 STAR KKH SSF BRIGHT KELLY 408 ET (DLF,HYF,IEF)  
 P42761411 SSF KEYSHA 949 (DLF,HYF,IEF)

REMITALL ONLINE 122L (SOD,CHB)(DLF,HYF,IEF)  
 RB L1 DOMINETTE 8116  
 REMITALL KEYNOTE 20X (SOD,CHB)  
 TOP MSU MS 15G 8619

KT JOHN WAYNE 7167 (DLF,HYF,IEF)  
 RST MS 7167 JOHN WAYNE 9170 (DLF,HYF,IEF)  
 43037390 RST MS 1030 TOP SECRET 4080

KT 122L ONLINE 3074 (CHB)  
 KT MS K085 PROSPECTOR 4016 (DOD)  
 KT TOP SECRET 1030 (SOD,CHB)(DLF,HYF,IEF)  
 MS RST 2D ENHANCER 9008 (DOD)

| CE   | BW  | WW | YW | MM | M&G | REA  | MARB |
|------|-----|----|----|----|-----|------|------|
| -2.1 | 2.7 | 51 | 86 | 26 | 52  | 0.34 | 0.03 |

- Consigned by Maple Glen Farm
- BW 87 lb.; adj. 205-day wt. 755 lb.
- It is against my better judgment to let this heifer sell. We purchased her mother from Thomas Herefords at the national sale in Denver in 2009, then bred her to Bright Kelly to have outstanding EPDs — we got much more than we hoped for. She has lots of depth of rib and thickness, is correct in her lines and feminine — a total package. She will make for an outstanding show heifer or donor cow.

# 45 BG 158W LISA 27Y

Cow

P43191224 — Calved: Feb. 17, 2011 — Tattoo: RE 27Y — Polled



STAR BRIGHT FUTURE 533P ET (CHB)(DLF,HYF,IEF)  
 STAR TCF SHOCK & AWE 158W ET (DLF,HYF,IEF)  
 P42971547 MSU APOLLONIA 10M (DLF,HYF,IEF)

REMITALL ONLINE 122L (SOD,CHB)(DLF,HYF,IEF)  
 RB L1 DOMINETTE 8116  
 SHF INTERSTATE 20X D03 (SOD,CHB)  
 APOLLONIA OF BAR B 748

HB STAR BATTLE GROUND 2013 (DLF,HYF,IEF)  
 BG 2013 LISA 702  
 42813700 BG 29F SIS 524

C -S PURE GOLD 98170 (SOD,CHB)(DLF,HYF,IEF)  
 MSU MISS WRANGLER 61J  
 CS BOOMER 29F (SOD,CHB)(DLF,HYF,IEF)  
 BG L1 163J SALLY 218

| CE   | BW  | WW | YW | MM | M&G | REA  | MARB |
|------|-----|----|----|----|-----|------|------|
| -5.7 | 5.6 | 51 | 83 | 19 | 44  | 0.31 | 0.03 |

- Consigned by Bill Goehring
- BW 88 lb.; adj. 205-day wt. 662 lb., ratio 102
- 27Y is a three-quarter sister to Shock Wave, high-selling bull at the Star Lake fall sale. She is a sweetheart to work with, the best disposition you can find for a youngster looking to get started. She will compete with the big kids!



Lot 46 — MSF I Love Lucy 8Y ET

# 46 MSF I LOVE LUCY 8Y ET

Cow

P43235130 — Calved: March 4, 2011 — Tattoo: LE 8Y/RE MSF — Polled



THM DURANGO 4037 (CHB)(DLF,HYF,IEF)  
 CRR ABOUT TIME 743 (CHB)(DLF,HYF,IEF)  
 P42797564 CRR D03 CASSIE 206

CS BOOMER 29F (SOD,CHB)(DLF,HYF,IEF)  
 THM 7085 VICTRA 9036 (DLF,HYF,IEF)  
 SHF INTERSTATE 20X D03 (SOD,CHB)  
 CRR 475E CASSIE 838

HUTH 7E ENHANCER J085  
 J&J J085 ENHANTRESS L071  
 P42196359 RRR MS FELT 8007

HUTH ENHANCER 2D (SOD)(DLF,HYF,IEF)  
 HUTH CANDY B22 7E  
 FELTONS LUTE 680 (CHB)(DLF,HYF,IEF)  
 RRR MS FEL 6043

| CE  | BW  | WW | YW | MM | M&G | REA  | MARB |
|-----|-----|----|----|----|-----|------|------|
| 3.6 | 1.6 | 51 | 79 | 16 | 41  | 0.29 | 0.25 |

- Consigned by Mike Sorensen Family
- BW 84 lb.; adj. 205-day wt. 729 lb.
- A real attractive About Time x L071 show heifer. This one puts a lot of things in a pretty package — “show heifer deluxe.” Another great L071 daughter.

## Breed Avg. EPDs for 2010 Born Calves

| CE  | BW  | WW | YW | MM | M&G | MCE | MCW | SC  | FAT   | REA  | MARB | BMI\$ | CEZ\$ | BI\$ | CHB\$ |
|-----|-----|----|----|----|-----|-----|-----|-----|-------|------|------|-------|-------|------|-------|
| 0.4 | 3.6 | 44 | 73 | 17 | 39  | 0.9 | 85  | 0.7 | 0.001 | 0.25 | 0.04 | 17    | 15    | 15   | 20    |

EPDs in the top 35% of the breed are highlighted in yellow.





Lot 47 — LCC Final Destination 183

**47 LCC FINAL DESTINATION 183** Cow

P43187598 — Calved: March 10, 2011 — Tattoo: LE 183 — Polled



STAR BRIGHT FUTURE 533P ET (CHB)(DLF,HYF,IEF) REMITALL ONLINE 122L (SOD,CHB)(DLF,HYF,IEF)

LCC BACK N TIME ET (DLF,IEF)  
P42909938 LCC MERRY TIME 244

RB L1 DOMINETTE 8116  
MSU BR HALLMARK 25H  
MSU BR MERRY 24K

SSF 8619 EMBRACER 043

LCC MISS DESTINATION 333 (DOD)  
P42393089 LPH FANTASY 700

H 8E EMBRACER 8006 (CHB)  
TOP MSU MS 15G 8619  
BG STCB 926Y DAYTONA 213  
JGN STAR GAL 216

| CE   | BW  | WW | YW | MM | M&G | REA  | MARB  |
|------|-----|----|----|----|-----|------|-------|
| -2.2 | 4.5 | 57 | 89 | 23 | 51  | 0.46 | -0.03 |

- Consigned by Lowderman Cattle Co.
- Act. BW 78 lb.; adj. 205-day wt. 729 lb., ratio 106
- Here's an extremely attractive, smooth made female with all the bells and whistles. Her dam is a Dam of Distinction and a maternal sister is a past JNHE division champion. Without question, she is a big-time show candidate with the genetic background to be a front pasture power cow.

**48 WS QUEEN TEN 6300 127** Cow

43227842 — Calved: March 14, 2011 — Tattoo: BE 127 — Horned



KING TEN  
WS KING TEN 6300 ET  
42862011 WS MS STAR 552 7107

FRC SIR 1  
FRC MADAM 45  
WS STAR 3178 552 (SOD,CHB)  
WS MS APRVL 269 5152

WS BATTLE 64 0161 (CHB)  
WS MISS BATTLE 0161 5181  
42616501 WS DUCHESS 419 0113

WS STAR 3178 64 (SOD,CHB)  
WS PEARLETTE 3102 (DOD)  
WS DUKE 8191 419 (SOD,CHB)  
WS DOMINETTE 373 580 (DOD)

| CE   | BW  | WW | YW | MM | M&G | REA  | MARB |
|------|-----|----|----|----|-----|------|------|
| -0.1 | 2.0 | 39 | 66 | 17 | 37  | 0.13 | 0.23 |

- Consigned by Wiese & Sons
- Act. BW 71 lb.; adj. 205-day wt. 649 lb., ratio 104
- Green and fresh, wonderful style and profile. Pigmented. Selected specifically for the Expo from 130 heifers. Her sire produces calves that have the growth and performance that we are looking for!



Lot 49 — JJB Firework 7Y

## 49 JJB FIREWORK 7Y

Cow

P43210553 — Calved: March 17, 2011 — Tattoo: LE 7Y/RE JJB — Polled



REMITALL ONLINE 122L (SOD,CHB)(DLF,HYF,IEF)  
 HCC LEGACY S01 ET (DLF,HYF,IEF)  
 P42697758 CF MISS LEGEND 23N ET

REMITALL EMBRACER 8E (SOD,CHB)(HYF)  
 REMITALL CATALINA 24H  
 DS KCK LEGEND 10J  
 SALUNGA BONITA 133H

STAR 12G PALLIADIN 115N (CHB)  
 STAR JB PAULIE NANNA 402R ET  
 P42648142 STAR JUDY HCF 322J

HAROLDSON'S PRINGLE 20X 12G (CHB)(DLF,HYF,IEF)  
 GHC MISS CARLA 35J (DLF,HYF,IEF)  
 MSU STAR DR HEADMASTER  
 BRL RANCH BELLE 92C

| CE   | BW  | WW | YW | MM | M&G | REA  | MARB |
|------|-----|----|----|----|-----|------|------|
| -1.6 | 6.7 | 56 | 98 | 18 | 46  | 0.46 | 0.07 |

- Consigned by JJB Cattle Co.
- Act. BW 96 lb.; adj. 205-day wt. 606 lb., ratio 110
- This heifer was born to have a showstick on her belly. I'm not going to promise you banners, but I will tell you that anyone on the halter of this girl will look great! Firework is sired by Legacy and offers all the bone, mass and style you could ask for with a neck that won't stop. Visit [www.jjbcattle.com](http://www.jjbcattle.com) for updated pictures as well as a video of this heifer.

## 50 R&R EMMA 19Y

Cow

P43223543 — Calved: March 19, 2011 — Tattoo: LE 19Y — Horned



S&S KODIAK 49J (SOD)  
 MSU TCF TITLEIST 2T ET (DLF,HYF,IEF)  
 P42808673 MSU TCF RACHAEL ET 56N

VCR EAST KODIAK 506E (SOD,CHB)(DLF,HYF,IEF)  
 S&S LADY LAMP 467B (DOD)  
 REMITALL ONLINE 122L (SOD,CHB)(DLF,HYF,IEF)  
 HH MISS ADV 786G 1ET

LAGRAND BOOMER 31P ET  
 R&R EMMA 21S  
 P42716585 R&R EMMA 18P

REMITALL BOOMER 46B (SOD,CHB)(DLF,HYF,IEF)  
 GK TRACY 100C (DOD)  
 R&R MATT 19M  
 R&R EMMA STYLE 15K

| CE  | BW  | WW | YW | MM | M&G | REA  | MARB |
|-----|-----|----|----|----|-----|------|------|
| 0.8 | 3.1 | 43 | 68 | 11 | 33  | 0.40 | 0.03 |

- Consigned by R&R Cattle Co.
- BW 80 lb.; adj. 205-day wt. 530 lb.
- A Titleist heifer with style and balance.

### Breed Avg. EPDs for 2010 Born Calves

| CE  | BW  | WW | YW | MM | M&G | MCE | MCW | SC  | FAT   | REA  | MARB | BMI\$ | CEZ\$ | BI\$ | CHB\$ |
|-----|-----|----|----|----|-----|-----|-----|-----|-------|------|------|-------|-------|------|-------|
| 0.4 | 3.6 | 44 | 73 | 17 | 39  | 0.9 | 85  | 0.7 | 0.001 | 0.25 | 0.04 | 17    | 15    | 15   | 20    |

EPDs in the top 35% of the breed are highlighted in yellow.



Lot 51 — JJB Show Goes On 8Y

51

## JJB SHOW GOES ON 8Y

Cow

P43207909 — Calved: March 28, 2011 — Tattoo: LE 8Y/RE JJB — Horned



REMITALL ONLINE 122L (SOD,CHB){DLF,HYF,IEF}  
 HCC LEGACY S01 ET (DLF,HYF,IEF)  
 P42697758 CF MISS LEGEND 23N ET

REMITALL EMBRACER 8E (SOD,CHB){HYF}  
 REMITALL CATALINA 24H  
 DS KCK LEGEND 10J  
 SALUNGA BONITA 133H

STAR OBF BOGART 5L (CHB){DLF,HYF,IEF}  
 STAR 5L LUCKY GAL 57T  
 P42774500 HCF LUCKY LADY 3L (DLF,HYF,IEF)

CS BOOMER 29F (SOD,CHB){DLF,HYF,IEF}  
 NJW 1Y LARIAT 41E  
 STAR SS THUNDER LT 62J (SOD,CHB){DLF,HYF,IEF}  
 SSF DYNASTY GAL 543

| CE  | BW  | WW | YW | MM | M&G | REA  | MARB |
|-----|-----|----|----|----|-----|------|------|
| 2.0 | 3.2 | 49 | 90 | 20 | 44  | 0.60 | 0.09 |

- Consigned by JJB Cattle Co.
- Act. BW 72 lb.; adj. 205-day wt. 616 lb., ratio 112
- It is hard to be modest when you have a heifer with this much rib shape and style with outstanding EPDs to boot! Show Goes On will no doubt be a cornerstone female in whatever herd she is put in. This dark red horned heifer should be one that has lots of fans at the Expo. Visit [www.jjbcattle.com](http://www.jjbcattle.com) for updated pictures as well as a video of this heifer.



CRR About Time 743 — Sire of Lots 6, 7, 23, 25, 28, 29, 32, 40, 46 & 52.

52

## BAJA MILEY 60Y

Cow

P43232426 — Calved: April 9, 2011 — Tattoo: LE 60Y/RE BAJA — Polled



THM DURANGO 4037 (CHB){DLF,HYF,IEF}  
 CRR ABOUT TIME 743 (CHB){DLF,HYF,IEF}  
 P42797564 CRR D03 CASSIE 206

CS BOOMER 29F (SOD,CHB){DLF,HYF,IEF}  
 THM 7085 VICTRA 9036 (DLF,HYF,IEF)  
 SHF INTERSTATE 20X D03 (SOD,CHB)  
 CRR 475E CASSIE 838

BR MOLER ET (CHB){DLF,IEF}  
 LPH BR 4406 MOLLY 9560  
 P43026942 LPH CUSTOM SHANNON 4406

REMITALL ONLINE 122L (SOD,CHB){DLF,HYF,IEF}  
 DM L1 DOMINETTE 820  
 LLL C&L CUSTOM 100K  
 LJR SHANNON 109G

| CE  | BW  | WW | YW | MM | M&G | REA  | MARB |
|-----|-----|----|----|----|-----|------|------|
| 2.6 | 4.0 | 54 | 84 | 18 | 45  | 0.68 | 0.03 |

- Consigned by Baja Cattle
- Act. BW 73 lb.
- This heifer will get your attention. She carries her head high as it ties into the top of her shoulder. She is extremely level over her top all the way back to her hip. She is wide pinned and carries that all the way to the ground. Loads of genetic potential that has a look all of her own.

**53****VCF S44 LUCY 05Y**

Cow

P43233562 — Calved: April 13, 2011 — Tattoo: LE 05Y/RE VCF — Polled



C -S PURE GOLD 98170 (SOD,CHB)(DLF,IEF)  
 KAGS SCHOLARSHIP S44 ET (DLF,IEF)  
 42745290 KAGS MISS CINDERELLA M6

C GOLD RUSH 1ET  
 C MS DOM 93218 1ET  
 DB GRAND SLAM  
 JH MISS KATHY

HAWK WRB DUECE 30K  
 HAWK CARMA 30K 0606  
 P42731222 CHURCHILL LADY 448P

REMITALL ENERGIZER 153E  
 RST ROF REBA 5D 4G  
 STAR AMERICA BNMHPH SS MKS 68M (DLF,HYF,IEF)  
 CHURCHILL LADY 874 (DOD)

| CE   | BW  | WW | YW | MM | M&G | REA  | MARB  |
|------|-----|----|----|----|-----|------|-------|
| -1.9 | 5.1 | 53 | 81 | 26 | 52  | 0.40 | -0.05 |

- Consigned by Valley Creek Farm
- Act. BW 92 lb.
- This powerhouse heifer combines balance, heavy bone, a big top and muscle to make a very eye-appealing package.

*Purple Milsap 45S — Sire of Lot 54***54****BAJA BAILEY 29Y**

Cow

P43235000 — Calved: April 16, 2011 — Tattoo: LE 29Y/RE BAJA — Polled



BR MOLER ET (CHB)(DLF,IEF)  
 PURPLE MILSAP 45S  
 P42735545 JH MISS SUSIE 06L

REMITALL ONLINE 122L (SOD,CHB)(DLF,HYF,IEF)  
 DM L1 DOMINETTE 820  
 NJW 1Y WRANGLER 19D (SOD,CHB)(HYF)  
 RH MS BT 445M 8606 (DOD)

DB GRAND SLAM  
 DREAMY 280 MISS LADY LEGEND 829  
 P42995494 MGM LADY LEGEND 11P

K&B SUMMIT 8103  
 B&S MISS SUMMIT 145E  
 FELTONS LEGEND 242 (SOD,CHB)(HYF)  
 MGM MERRY MASTER M11

| CE  | BW  | WW | YW | MM | M&G | REA  | MARB |
|-----|-----|----|----|----|-----|------|------|
| 0.6 | 5.5 | 52 | 85 | 17 | 43  | 0.34 | 0.04 |

- Consigned by Baja Cattle
- Adj. BW 84 lb.
- Substance with style! This heifer has the best from both parents — look, balance and power. Sound from the ground up and enough hair to spare. These Milsap daughters have what it takes to get it done in the showing and in the pasture.

**Breed Avg. EPDs for 2010 Born Calves**

| CE  | BW  | WW | YW | MM | M&G | MCE | MCW | SC  | FAT   | REA  | MARB | BMI\$ | CEZ\$ | BI\$ | CHB\$ |
|-----|-----|----|----|----|-----|-----|-----|-----|-------|------|------|-------|-------|------|-------|
| 0.4 | 3.6 | 44 | 73 | 17 | 39  | 0.9 | 85  | 0.7 | 0.001 | 0.25 | 0.04 | 17    | 15    | 15   | 20    |

EPDs in the top 35% of the breed are highlighted in yellow.



Lot 55 — VCF S44 Marly 07Y

**55**

**VCF S44 MARLY 07Y**

Cow

P43233563 — Calved: April 20, 2011 — Tattoo: LE 07Y/RE VCF — Polled



C -S PURE GOLD 98170 (SOD,CHB)(DLF,IEF)  
 KAGS SCHOLARSHIP S44 ET (DLF,IEF)  
 42745290 KAGS MISS CINDERELLA M6

C GOLD RUSH 1ET  
 C MS DOM 93218 1ET  
 DB GRAND SLAM  
 JH MISS KATHY

BH 110E RATCHETT G727  
 VCF G727 GODDESS 15N  
 P42436604 RRF MISS REBEL 31F

SBR RATCHETT 110E  
 BH ROYAL LADY E534  
 FR REBEL LAD B204  
 RH MS BT 445M W8919

| CE   | BW  | WW | YW | MM | M&G | REA  | MARB  |
|------|-----|----|----|----|-----|------|-------|
| -2.2 | 3.7 | 45 | 68 | 18 | 40  | 0.37 | -0.05 |

- Consigned by Valley Creek Farm
- Act. BW 84 lb.
- This April heifer really has that show heifer look. Nice fronted, wide topped, heavy boned and lots of muscle expression — all in a neat package with great genetics and EPDs.



Lot 56 — CPH Joyful Antics 995Y

**56**

**CPH JOYFUL ANTICS 995Y**

Cow

P43189327 — Calved: April 22, 2011 — Tattoo: LE 995Y/RE CPH — Polled



FELTONS LEGEND 242 (SOD,CHB)(HYF)  
 MSU TCF REVOLUTION 4R (CHB)(DLF,HYF,IEF)  
 P42593689 MSU TCF RACHAEL ET 54N (DLF,HYF,IEF)

FELTONS DOMINO 774 (SOD,CHB)(DLF,HYF,IEF)  
 FELTONS G15  
 REMITALL ONLINE 122L (SOD,CHB)(DLF,HYF,IEF)  
 HH MISS ADV 786G 1ET

LAGRAND RELOAD 80P ET (CHB)(DLF,HYF,IEF)  
 BAJA ENVY 994 ET  
 P42999101 CT MISS LOTTIE 94S (DLF,IEF)

AA PRF WIDELOAD  
 TSF MS KEYNOTE 729  
 SB STAR HOLLYWOOD 103N ET  
 CT MISS FARMER 131N

| CE   | BW  | WW | YW  | MM | M&G   | REA  | MARB |
|------|-----|----|-----|----|-------|------|------|
| -2.2 | 4.8 | 62 | 100 | 25 | 0.010 | 0.67 | 0.08 |

- Consigned by Casteel Polled Herefords
- Act. BW 81 lb.; adj. 205-day wt. 625 lb., ratio 100
- This April heifer is a showstopper for sure! "Joy" is a stylish Revolution 4R daughter who will compete in the showing and in the pasture. She is a thick, clean-fronted, long-hipped heifer who has power and class written all over her. For more information, please visit [www.casteelpolledherefords.com](http://www.casteelpolledherefords.com).

## 57 RPH 197X LADY SHOCK158W 12Y Cow

P43222992 — Calved: May 9, 2011 — Tattoo: LE 12Y — Polled



STAR BRIGHT FUTURE 533P ET (CHB){DLF,HYF,IEF} REMITALL ONLINE 122L (SOD,CHB){DLF,HYF,IEF}  
 STAR TCF SHOCK & AWE 158W ET (DLF,HYF,IEF) RB L1 DOMINETTE 8116  
 P42971547 MSU APOLLONIA 10M (DLF,HYF,IEF) SHF INTERSTATE 20X D03 (SOD,CHB)  
 APOLLONIA OF BAR B 748

REMITALL ONLINE 122L (SOD,CHB){DLF,HYF,IEF} REMITALL EMBRACER 8E (SOD,CHB){HYF}  
 RPH 197X ONLINE LADY 122L 10N (DLF,IEF) REMITALL CATALINA 24H  
 P42411505 RPH 197X MS ADVANCE 9012Y F1 HH ADVANCE 9012Y (SOD){DLF,IEC}  
 RPH 197X FAIR VISION C1

| CE   | BW  | WW | YW | MM | M&G | REA  | MARB |
|------|-----|----|----|----|-----|------|------|
| -2.9 | 3.4 | 50 | 83 | 19 | 44  | 0.27 | 0.01 |

- *Consigned by Rabideau Polled Herefords*
- Act. BW 86 lb.; adj. 205-day wt. 664 lb., ratio 104
- This heifer has a very attractive profile with a long front and spine. She is very correct with excellent hind legs and long walking strides. She is sired by 2-time Denver champion, Shock & Awe. Her dam, a daughter of the iconic Online, is a very consistent producer with a nice udder and plenty of milk. Here is a heifer that should show and then become a top-end productive cow.

## 58 PPH LOVELY 102Y Cow

P43224800 — Calved: June 2, 2011 — Tattoo: LE 102Y — Polled



AA BOOMER 611 REMITALL BOOMER 46B (SOD,CHB){DLF,HYF,IEF}  
 AA PRF WIDELOAD EF IDEALIST PENNY 812  
 P42325186 PRF MS SCARLETT 919 NJW 1Y WRANGLER 19D (SOD,CHB){HYF}  
 AA IMPERIAL LADY 2119

BR MOLER ET (CHB){DLF,IEF} REMITALL ONLINE 122L (SOD,CHB){DLF,HYF,IEF}  
 PPH 4002 VICKI 803U ET (DLF,IEF) DM L1 DOMINETTE 820  
 P42942376 PPH 75A BONITA 601F WTK 55Y BOND 75A (SOD){DLF,HYF,IEF}  
 PPH JUSTA TWIGGY 67K 1T

| CE  | BW  | WW | YW | MM | M&G | REA  | MARB  |
|-----|-----|----|----|----|-----|------|-------|
| 0.2 | 3.1 | 47 | 78 | 19 | 43  | 0.50 | -0.08 |

- *Consigned by Paul Polled Herefords*
- Act. BW 72 lb.
- “Lovely” is a very appropriate name for this heifer. She is a top show prospect as well as a super brood cow prospect.

## 59 K7 908 DOMINETTE 1168 Cow

P43235262 — Calved: Sept. 4, 2011 — Tattoo: LE 1168/RE K7 — Polled



UPS DOMINO 5216 (CHB){DLF,IEF} UPS DOMINO 3027 (CHB){DLF,HYF,IEF}  
 K7 5216 DOMINO 908 (DLF,HYF,IEF) UPS MISS MOM 2756 (DOD)  
 43006422 K7 110 DOMINETTE 349 (DOD){DLF,HYF,IEF} K7S 688 DOMINO 110  
 K7 335 DOMINET 4047

SPHC 43E GENERAL 218H SPHC 3A CAPTAIN 43E  
 K7 MISS MONTY 161 SPHC VICTOR BEA 5P 8D (DOD)  
 P42266441 K7 335 DOMINETTE 7026 STAR DONALD 335F 4ET (SOD)  
 K7 521 DOMINETTE 901

| CE  | BW  | WW | YW | MM | M&G | REA  | MARB |
|-----|-----|----|----|----|-----|------|------|
| 0.0 | 4.3 | 41 | 68 | 25 | 45  | 0.26 | 0.02 |

- *Consigned by K7 Herefords*
- Act. BW 88 lb.
- 1168 is our top heifer calf out of the fall crop. Sired by 2-time Iowa State Fair Champion Bull, K7 5216 Domino 908. Her 10-year-old dam goes back to one of our all-time best cows. This is a very complete made polled heifer calf.

# SELLING CHOICE

## 60A DOSS 4R WHITNEY DHY 24

Cow



P43229255 — Calved: Sept. 1, 2011 — Tattoo: LE DHY 23 — Polled

FELTONS LEGEND 242 (SOD,CHB){HYF}  
MSU TCF REVOLUTION 4R (CHB){DLF,HYF,IEF}  
P42593689 MSU TCF RACHAEL ET 54N (DLF,HYF,IEF)

FELTONS DOMINO 774 (SOD,CHB){DLF,HYF,IEF}  
FELTONS G15  
REMITALL ONLINE 122L (SOD,CHB){DLF,HYF,IEF}  
HH MISS ADV 786G 1ET

BR DM 15 KEY 1167  
F&F JDM MS POUNDER 911 (DLF,IEF)  
43013955 F&F MS REMITALL POUNDER 6171ET

BR 39 SUMMIT 5115  
DM L1 DOMINETTE 820  
REMITALL LAGRD POUNDER ET 204P  
BSJ MISS REMITALL ONLINE 025N

| CE  | BW  | WW | YW | MM | M&G | REA  | MARB |
|-----|-----|----|----|----|-----|------|------|
| 1.0 | 2.6 | 55 | 87 | 23 | 50  | 0.50 | 0.08 |

- Consigned by Doss Hereford Farms
- Act. BW 65 lb.
- Not only is this a very good show heifer but also one with a serious set of numbers. We don't let many Revolution daughters leave the place and this one really hurts. We wanted to bring our best young heifers to Des Moines and this heifer got the mark. We will be selling choice and hopefully this heifer is left — we won't mind taking her back to our herd for a replacement.

## 60B DOSS J939 SAHARA DHY 30

Cow



P43229211 — Calved: Sept. 6, 2011 — Tattoo: LE DHY 30 — Polled

TH 908 57G GAVEL 32M ET (CHB)  
BOYD PERFORMER J939 ET (DLF,HYF,IEF)  
P42934397 BOYD DD FASINATION 1114

RU 20X BOULDER 57G (CHB)  
HUSO GEM DANI Y908 (DOD)  
DR ACHIEVER 8403 (SOD){DLF,HYF,IEF}  
BOYD FASINATION 8143

THM ENYETO VIC 5068  
RHF QUEEN ENYETO 5068 7086T  
P42830815 BURKS NUFF QUEEN 45H 0140

STAR 8006 ENYETO 163M ET (CHB)  
THM PERF VICTRA 9004  
LLL NUFF SAID 45H (SOD){DLF,IEF}  
FCF DELIVERY QUEEN C264

| CE   | BW  | WW | YW | MM | M&G | REA  | MARB  |
|------|-----|----|----|----|-----|------|-------|
| -1.4 | 1.8 | 42 | 66 | 17 | 38  | 0.26 | -0.01 |

- Consigned by Doss Hereford Farms
- Act. BW 62 lb.
- This heifer is one that will show. Her sire, Boyd Performer J939 ET, is a member of the Genex Hereford AI line-up and was our clean-up bull for several years. If you want one that will win, this is a heifer you need to mark. She is the right age and size to make a great starter show heifer for a younger showman. We are offering choice of these two fall heifers. This is one to look at.

### Breed Avg. EPDs for 2010 Born Calves

| CE  | BW  | WW | YW | MM | M&G | MCE | MCW | SC  | FAT   | REA  | MARB | BMI\$ | CEZ\$ | BIIS | CHBS |
|-----|-----|----|----|----|-----|-----|-----|-----|-------|------|------|-------|-------|------|------|
| 0.4 | 3.6 | 44 | 73 | 17 | 39  | 0.9 | 85  | 0.7 | 0.001 | 0.25 | 0.04 | 17    | 15    | 15   | 20   |

EPDs in the top 35% of the breed are highlighted in yellow.

# FLUSH PACKAGE



Lot 61 — K7 2072 Lass 864

## 61 K7 2072 LASS 864

Flush

42950739 — Calved: Sept. 1, 2008 — Tattoo: LE 864/RE K7 — Horned



**C -S PURE GOLD 98170** (SOD,CHB)(DLF,IEF) **C GOLD RUSH 1ET**  
**GOLDEN ACHIEVER 2072** (DLF,HYF,IEF) **C MS DOM 93218 1ET**  
**42281159 C 8403 MS ACHV 96044** (DOD) **DR ACHIEVER 8403** (SOD)(DLF,HYF,IEF)  
**C 590 MS DOM 94007**

**HR ROBIN HOOD 52F** (SOD)(DLF,IEF) **CFR ROBINSON 359**  
**K7 RH 52F LASS 320** **HR PROPHET 62C**  
**42460274 K7 783 DOMINETTE 8028** **CL 1 DOMINO 783 2ET** (SOD)  
**K7 ROCKETTE 029**

| CE   | BW  | WW | YW | MM | M&G | REA  | MARB |
|------|-----|----|----|----|-----|------|------|
| -1.8 | 4.0 | 44 | 74 | 23 | 45  | 0.14 | 0.12 |

- *Consigned by A&J Cattle*
- Here is a true sale feature and great opportunity on a female that made her mark in Iowa during her show career. Embryo sales have been averaging in excess of \$400 per embryo. Here is your chance to flush this great female on a bull of your choice. Unbeaten in class and multiple-time grand or reserve Hereford, this massive, soft-made, sound, stout featured cow has what it takes to work in any program.
- Guarantee six (6) transferable embryos with a cap of 10 embryos. Every embryo over 10 will be split between buyer and seller. Flush work to be done by Dr. Andrew Nibe at Garver Animal Health in Albia, Iowa. Buyer provides semen and pays flush costs acquired. If cap is reached, seller will entertain costs on their share of embryos. Please inquire for further details. Cow will be ready to flush in April 2012.

### Breed Avg. EPDs for 2010 Born Calves

| CE  | BW  | WW | YW | MM | M&G | MCE | MCW | SC  | FAT   | REA  | MARB | BMI\$ | CEZ\$ | BI\$ | CHB\$ |
|-----|-----|----|----|----|-----|-----|-----|-----|-------|------|------|-------|-------|------|-------|
| 0.4 | 3.6 | 44 | 73 | 17 | 39  | 0.9 | 85  | 0.7 | 0.001 | 0.25 | 0.04 | 17    | 15    | 15   | 20    |

EPDs in the top 35% of the breed are highlighted in yellow.



# IOWA JUNIOR HEREFORD ASSOCIATION DONATED LOTS

Proceeds from auction of the following items will go to the Iowa Junior Hereford Association:

## **J1** One-half page black and white ad in *Livestock Plus*.

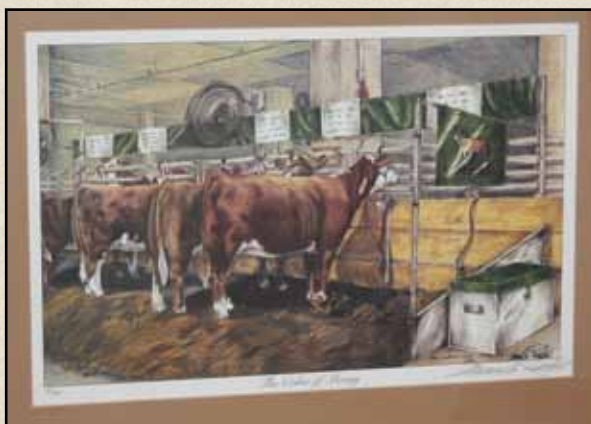
- Can upgrade to color at extra cost.
- Value: \$290
- Donated by *Livestock Plus*

## **J2** Display ad in *Midwest Marketer*

- Value: \$330
- Donated by *Midwest Marketer*

## **J3** One-half page ad in *National Livestock Exhibitor*

- Value: \$350
- Donated by *National Livestock Exhibitor*



Lot J4 — “The Color of Money”

## **J4** Framed Color Print by Amanda Raithel

- Framed color print, “The Color of Money”
- Donated by Mike Sorensen

# HEREFORD EXPECTED PROGENY DIFFERENCES (EPDS)

## **Calving Ease — Direct (CE)**

CE EPDs are based on calving ease scores and birth weights. More positive EPDs are favorable and indicate easier calving. The EPD for direct calving ease indicates the influence of the sire on calving ease in purebred females calving at two years of age. In the sire summary, an EPD in a black box indicates that the bull is a trait leader.

## **Birth Weight (BW)**

Progeny of the sire above can be expected to weigh an average of 3.2 lb. more at birth than progeny sired by a bull with an EPD of -1.0 lb. ( $2.2 \text{ minus } -1.0 = 3.2 \text{ lb.}$ ). Birth weight is an indicator of calving ease. Larger BW EPDs usually, but not always, indicate more calving difficulty. The figure in parentheses found after each EPD is an accuracy value or reliability of the EPD. To learn more about how to use accuracy when evaluating EPDs please refer to the section “Accuracy and Confidence Range” in the Spring 2011 Sire Summary.

## **Weaning Weight (WW)**

WW EPD reflects pre-weaning growth. Calves sired by a bull with a +30 WW EPD should have a 20 lb. advantage in 205-day adjusted weaning weight compared to calves sired by a bull with an EPD of +10 lb. ( $30 \text{ minus } 10 = 20 \text{ lb.}$ ).

## **Yearling Weight (YW)**

YW EPD reflects differences in the 365-day adjusted yearling weight for progeny. It is the best estimate of total growth.

## **Maternal Milk (MM)**

The milking ability of a sire's daughters is expressed in pounds of calf weaned. It predicts the difference in average weaning weights of sires' daughters' progeny due to milking ability. Daughters of the sire with a +14 MM EPD should produce progeny with 205-day weights averaging 24 lb. more (as a result of greater milk production) than daughters of a bull with a MM EPD of -10 lb. ( $14 \text{ minus } -10.0 = 24 \text{ lb.}$ ). This difference in weaning weight is due to total milk production during the entire lactation.

## **Maternal Milk & Growth (M&G)**

Maternal Milk & Growth reflects what the sire is expected to transmit to his daughters for a combination of growth genetics through weaning and genetics for milking ability. It is an estimate of daughters' progeny weaning weight. A bull with a 29 lb. M&G EPD should sire daughters with progeny weaning weights averaging 19 lb. heavier than progeny of a bull's daughters with a M&G EPD of 10 lb. ( $29 \text{ minus } 10 = 19 \text{ lb.}$ ). It is equal to one-half the sire's weaning weight EPD, plus all of his MM EPD. No accuracy is associated with this since it is simply a mathematical combination of two other EPDs. It is sometimes referred to as “total maternal” or “combined maternal.”

## **Scrotal Circumference (SC)**

Measured in centimeters and adjusted to 365 days of age, SC EPD is the best estimate of fertility. It is related to the bull's own semen quantity and quality and is also associated with age at puberty of sons and daughters. Larger SC EPDs suggest younger age at puberty. Yearling sons of a sire with a 0.7 SC EPD should have yearling scrotal circumference measurements that average 0.7 centimeters (cm) larger than progeny by a bull with an EPD of 0.0 cm. In the Hereford genetic analysis, a multiple-trait model was used for scrotal circumference. Weaning weight was used as a predictor variable to increase the prediction accuracy of SC EPDs. Therefore, an animal with a weaning weight EPD should also have a SC EPD.

## **Ribeye Area (REA)**

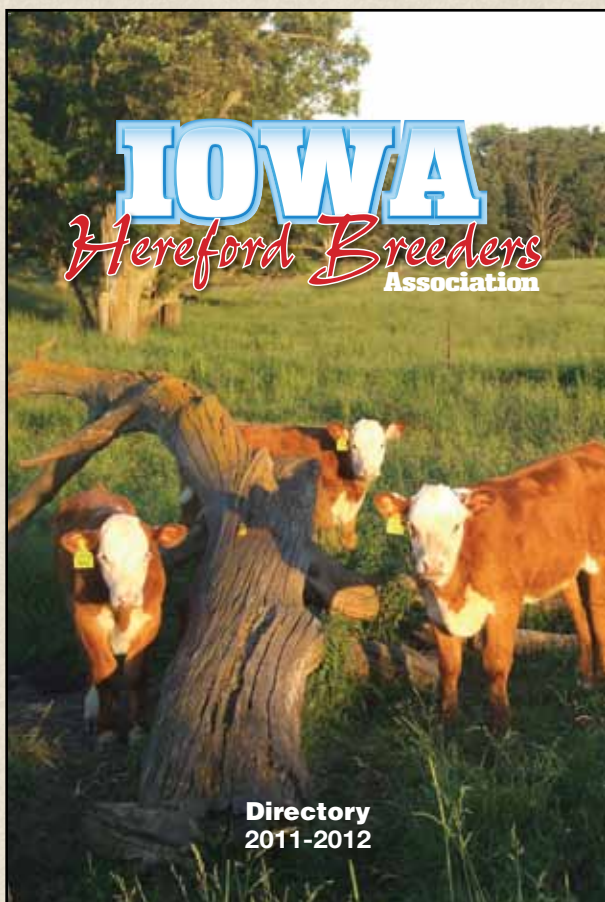
REA EPDs reflect differences in an adjusted 365-day ribeye area measurement based on carcass measurements of harvested cattle. Sires with relatively higher REA EPDs are expected to produce better-muscled and higher percentage yielding slaughter progeny than will sires with lower REA EPDs. Ultrasound measurements are also incorporated into this trait and have been shown to be highly correlated with the performance of slaughter progeny. All data is expressed on a carcass scale.

## **Marbling (MARB)**

MARB EPDs reflect differences in an adjusted 365-day marbling score (intramuscular fat, [IMF]) based on carcass measurements of harvested cattle. Breeding cattle with higher MARB EPDs should produce slaughter progeny with a higher degree of IMF and therefore higher quality grades. Ultrasound measurements are also incorporated into this trait and have been shown to be highly correlated with the performance of slaughter progeny. All data is expressed on a carcass scale.

*For additional sources  
of top Hereford genetics, request a copy  
of the 2011-2012*

## **Iowa Hereford Breeders Association directory**



**Iowa Hereford Breeders  
Association**

**Becky Simpson, Administrative Secretary**  
13359 280th St.  
Redfield, IA 50233-6014  
515-833-2991 • [becksimp@aol.com](mailto:becksimp@aol.com)



Iowa Hereford Breeders Association  
13359 280th St.  
Redfield, IA 50233-6014

**TIME DATED MATERIAL**

